

## Improvement of Extreme Forecast Index (EFI) products

With the aim of assisting National Met Services in their provision of early warning climate information, the Tokyo Climate Center (TCC) provides the EFI products on the TCC website at <https://ds.data.jma.go.jp/tcc/tcc/products/model/index.html>. EFI is designed to measure how extreme a real-time ensemble forecast is with respect to the forecast climatology, and the products are powerful quick-look guidance to detect potential extreme weather events.

TCC is now going to improve the EFI products on 15 September 2020.

The improvements are as follows:

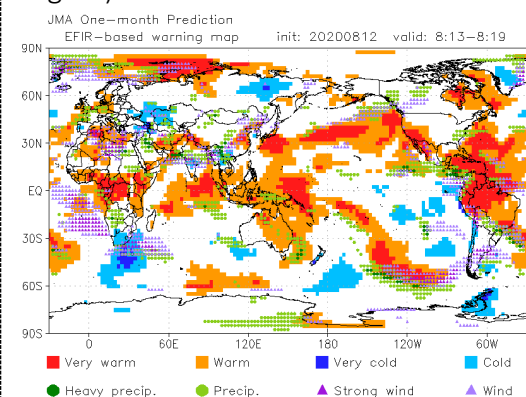
- (1) Increase the frequency of provision from once a week to once a day.
- (2) Improve the products' resolution from 2.5 to 1.25 degree in gridded data
- (3) Update the model climatology for EFI calculation.

We hope the high-resolution products and its daily-provision are helpful for issuing early-warning information in a timely manner. You can access our TCC's renewed EFI products at the same URL above. **Please note these EFI products are password protected and only registered NMHSs staff can access these upgraded ones.** TCC welcomes your feedbacks/suggestions so that the tool will be further improved for use at respective NMHSs.

### Link

Forecast Products in Support of Early Warnings for Extreme Weather Events;  
<https://ds.data.jma.go.jp/tcc/tcc/gpv/EFI/index.php> (Password protected).

Previous version of Extreme weather warning map (horizontal resolutions: 2.5 degree) based on EFI values



Current version of the map (horizontal resolutions: 1.25 degree)

