

# NEAR-GOOS

## Regional Real Time Data Base

Japan Meteorological Agency

NEAR-GOOS Regional Real Time Data Base (RRTDB) is an access point to global ocean data (<https://www.data.jma.go.jp/goos/data/>).

It provides:

- in situ marine meteorological and oceanographic reports, and
- graphic chart and grid point values of oceanographic parameters.

Japan Meteorological Agency (JMA)

United Nations Educational, Scientific and Cultural Organization

IOC Sub-Commission for the Western Pacific (WESTPAC)

Home Documents JMA Products In-situ Data Cross-Section

**FM13 SHIP**  
NEAR-GOOS Region  
Manual on Codes

1. NEAR-GOOS Region/ship.obsDay12.rcvOct13 -- 11047 byte
2. NEAR-GOOS Region/ship.obsDay11.rcvOct13 -- 1773 byte
3. NEAR-GOOS Region/ship.obsDay10.rcvOct12 -- 996 byte
4. NEAR-GOOS Region/ship.obsDay11.rcvOct12 -- 13427 byte
5. NEAR-GOOS Region/ship.obsDay09.rcvOct11 -- 1149 byte
6. NEAR-GOOS Region/ship.obsDay10.rcvOct11 -- 15179 byte
7. NEAR-GOOS Region/ship.obsDay08.rcvOct10 -- 1214 byte
8. NEAR-GOOS Region/ship.obsDay09.rcvOct10 -- 15557 byte
9. NEAR-GOOS Region/ship.obsDay07.rcvOct09 -- 380 byte
10. NEAR-GOOS Region/ship.obsXXXX.rcvOct09 -- 80 byte
11. NEAR-GOOS Region/ship.obsDay08.rcvOct09 -- 14012 byte
12. NEAR-GOOS Region/ship.obsDay07.rcvOct08 -- 14278 byte
13. NEAR-GOOS Region/ship.obsDay06.rcvOct08 -- 182 byte
14. NEAR-GOOS Region/ship.obsDay05.rcvOct07 -- 695 byte
15. NEAR-GOOS Region/ship.obsDay06.rcvOct07 -- 14081 byte
16. NEAR-GOOS Region/ship.obsDay04.rcvOct06 -- 885 byte
17. NEAR-GOOS Region/ship.obsDay05.rcvOct06 -- 16043 byte
18. NEAR-GOOS Region/ship.obsDay03.rcvOct05 -- 846 byte
19. NEAR-GOOS Region/ship.obsDay04.rcvOct05 -- 16569 byte
20. NEAR-GOOS Region/ship.obsDay02.rcvOct04 -- 909 byte
21. NEAR-GOOS Region/ship.obsDay03.rcvOct04 -- 19902 byte
22. NEAR-GOOS Region/ship.obsDay01.rcvOct03 -- 1173 byte

Introduction  
About Usage of the Data  
**NEAR-GOOS Data Bases**

Regional Delayed Mode Data Base  
China Real Time Data Base  
China Delayed Mode Data Base  
Republic of Korea Real Time Data Base  
Republic of Korea Delayed Mode Data

*Daily Sea Surface Temperatures, 2021-10-10*

90°N  
60°N  
30°N  
0°  
30°S  
60°S  
90°S

0° 90°E 180° 90°W 0°

°C  
30  
25  
20  
15  
10  
5  
0

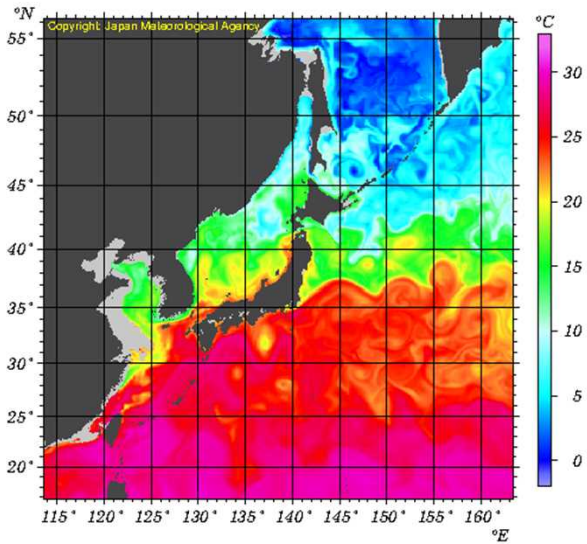
Copyright: Japan Meteorological Agency

The data which have resided in NEAR-GOOS RRTDB for 30 days are transferred to the NEAR-GOOS Regional Delayed Mode Data Base (RDMDDB: <https://near-goos1.jodc.go.jp/>), so that your access to the data is maintained.

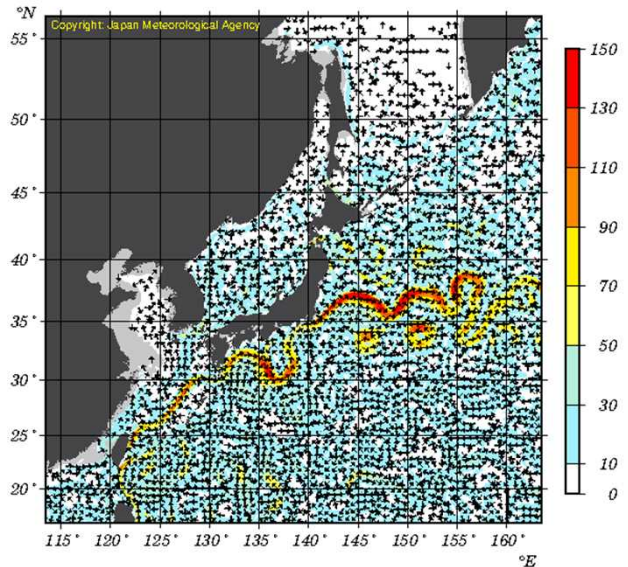
# You can find

Graphic charts of various oceanographic analyses

Daily 50 m Temperatures, 2021-10-10



10-day Mean Surface Currents, 2021-10-01/10



## In-situ observations and various GPVs

### NEAR-GOOS Regional Real Time Data Base

Home | Documents | JMA Products | In-situ Data | Cross-Section

#### In-situ Data

##### GTS Reports

- FM13 SHIP Reports of Surface Observation from a Sea Station  
NEAR-GOOS Region/Global
- FM16 BUOY Reports of a Buoy Observation  
NEAR-GOOS Region/Global
- FM62 TRACKOB Reports of Marine Surface Observation Along a Ship's Track  
NEAR-GOOS Region/Global
- FM63 BATHY Reports of Bathothermal Observation  
NEAR-GOOS Region/Global
- FM64 TESAC Temperature, Salinity and Current Reports from a Sea Station  
NEAR-GOOS Region/Global

##### Decoded Data

- NEAR-GOOS Region only
  - Temperatures
    - Sea Surface and Subsurface Temperature Data in the Reports via GTS and Provided by Users/Organizations
  - Wind (Format Version 1.00)
    - Wind Speed and Direction Data in Reports via GTS and Provided by Users/Organizations
- NEAR-GOOS Region and Global Region
  - Temperature and Salinity

Japan Meteorological Agency (JMA)

### NEAR-GOOS Regional Real Time Data Base

Home | Documents | JMA Products | In-situ Data | Cross-Section

#### JMA Products

The latest GPVs of JMA products such as SSTs, subsurface temperatures and currents with its sample images can be found here. For historical data, refer to the NEAR-GOOS RRTDB at <https://www.data.jma.go.jp/goos/data/pub/JMA-product>.

##### Analyzed Oceanic Conditions

- Sea Surface Temperatures (MGDSST)
  - Daily Sea Surface Temperatures in the Global Ocean
- Sea Surface Temperatures (HMSST)
  - Daily Sea Surface Temperatures in the Western North Pacific
  - 10-day Mean Sea Surface Temperatures in the Western North Pacific
- Sea Surface Temperatures (COBE-SST2)
  - Monthly Mean Sea Surface Temperatures in the Global Ocean
- Subsurface Temperatures and Surface Currents (NPR-4DVAR)
  - Daily Subsurface Temperatures in the Seas Adjacent to Japan
  - 10-day Mean Subsurface Temperatures in the Seas Adjacent to Japan
  - Monthly Mean Subsurface Temperatures in the Seas Adjacent to Japan
- Daily Surface Currents in the Seas Adjacent to Japan
- 10-day Mean Surface Currents in the Seas Adjacent to Japan
- Subsurface Temperatures and Surface Currents (MOVE/MRI.COM)
  - Daily Subsurface Temperatures in the Seas Adjacent to Japan

Japan Meteorological Agency (JMA)



#### Introduction

About Usage of the Data

##### NEAR-GOOS Data Bases

- Regional Delayed Mode Data Base
- China Real Time Data Base
- China Delayed Mode Data Base
- Republic of Korea Real Time Data Base
- Republic of Korea Delayed Mode Data Base
- Russian Federation Real Time Data Base
- Russian Federation Delayed Mode Data Base

##### NOWPAP Data Base

Marine Environmental Watch System for Northwest Pacific Region

#### Other Links

[NEARGOOS データベースの利用法](#)

[海洋観測通報の手引き](#)

- ◆ GTS data (SHIP, BUOY, BATHY, TESAC, TRACKOB)
- ◆ JMA R/Vs survey data
- ◆ JMA oceanographic analyses (SST, Subsurface temperatures, SSH, Current)
- ◆ Sea ice distribution

<https://www.data.jma.go.jp/goos/data/>