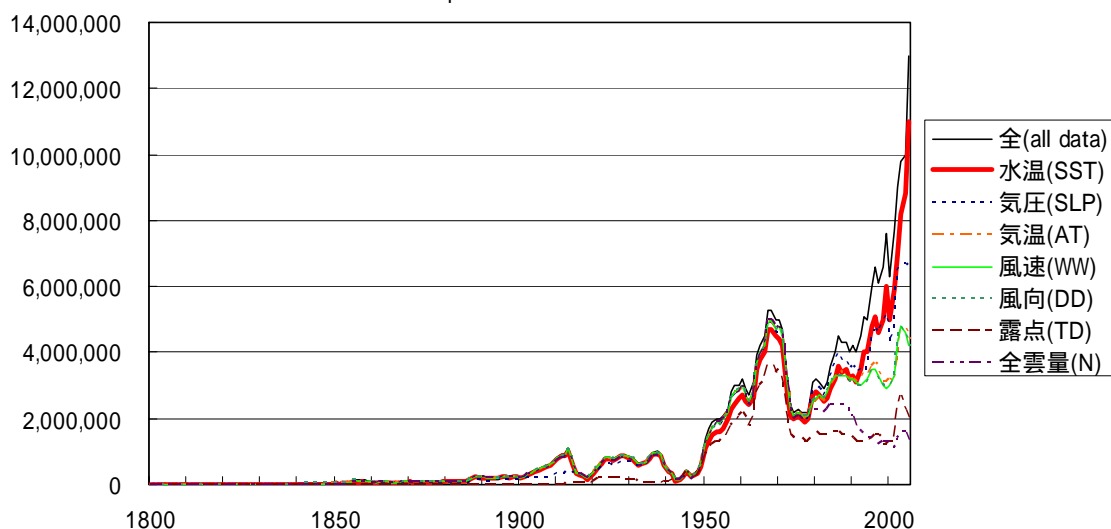


Annual Number of Reports in the Marine data base utilized

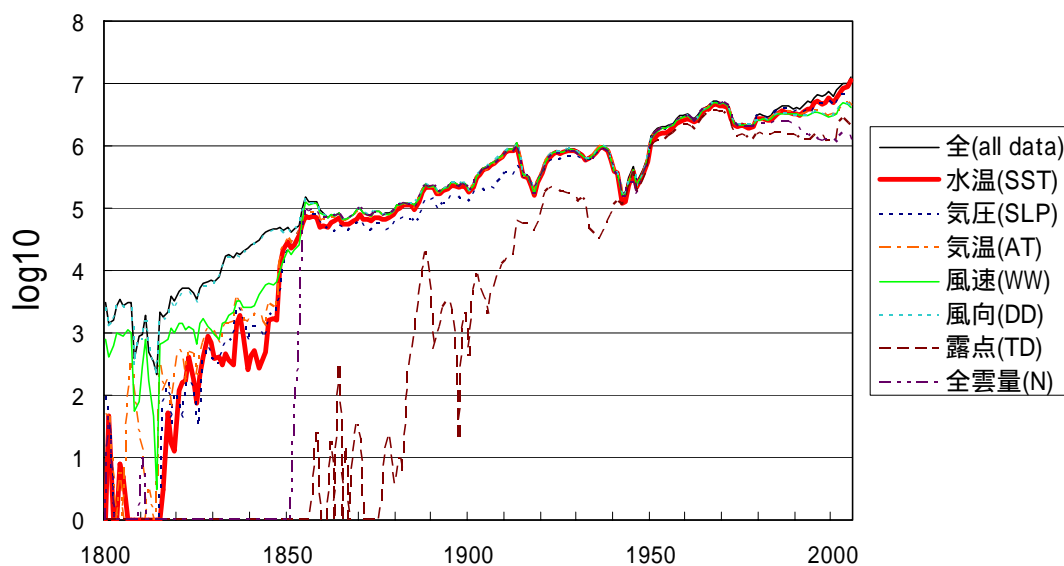


TIME SERIES OF THE ANNUAL NUMBER OF MARINE METEOROLOGICAL OBSERVATION REPORTS IN REPORTS IN THE DATA BASE UTILIZED IN SEA SURFACE TEMPERATURE ANALYSIS

The number of Sea Surface Temperature (SST) observation reports is shown in thick solid line. The number of other data of other data and all data (thin solid line) are also shown. SLP is Sea Level Pressure, AT is Atmosphere Temperature, WW is Temperature, WW is Wind speed, DD is wind Direction, TD is Dew point Temperature, N is cloud amount, in the remarks right of the figure.

海面水温解析に使用された観測データベースにおける年毎の海洋気象観測報告数の時系列
海面水温観測の報告数を太線により示す。また、他の観測報告数および全観測報告数(細実線)も示す。

Annual Number of Reports in the Marine data base utilized (Logarithmic Scale)

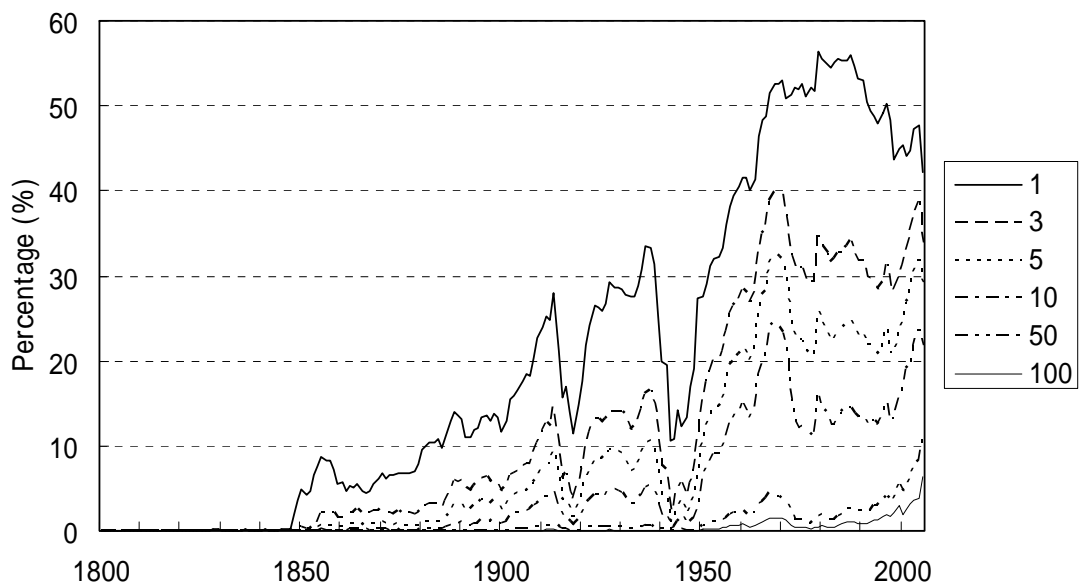


TIME SERIES OF THE ANNUAL NUMBER OF MARINE METEOROLOGICAL OBSERVATION REPORTS IN REPORTS IN THE DATA BASE UTILIZED IN SEA SURFACE TEMPERATURE ANALYSIS (LOGARITHMICALLY SCALED NUMBER IN VERTICAL AXIS)

The number of Sea Surface Temperature (SST) observation reports is shown in thick solid line. The number of other data of other data and all data (thin solid line) are also shown. SLP is Sea Level Pressure, AT is Atmosphere Temperature, WW is Temperature, WW is Wind speed, DD is wind Direction, TD is Dew point Temperature, N is cloud amount, in the remarks right of the figure.

海面水温解析に使用された観測データベースにおける年毎の海洋気象観測報告数の時系列 (縦軸を対数表示とする)

海面水温観測の報告数を太線により示す。また、他の観測報告数および全観測報告数(細実線)も示す。



TIME SERIES OF ANNUAL MEAN PERCENTAGE RATE OF AREAS HAVING OBSERVED REPORTS TO REPORTS TO GLOBAL OCEAN AREA, BASED ON THE NUMBER OF OBSERVATIONS PER MONTH IN 1x1 MONTH IN 1x1 DEGREE BOXES

The numbers in the remarks right of the figure show the minimum numbers of reports in 1x1 degree boxes per month, in per month, in concluding the boxes having observations.

月毎の緯度経度1x1度の箱の観測報告数に基づいた、観測報告の存在する海域の面積の全海洋に対する割合の時系列

図中右の凡例中の数字は、1x1度の箱で観測データ有りとする場合の1月当たりの最小観測データ数。月の値を年平均して示す。