

12th Asia/Oceania Meteorological Satellite User's Conference (AOMSUC)

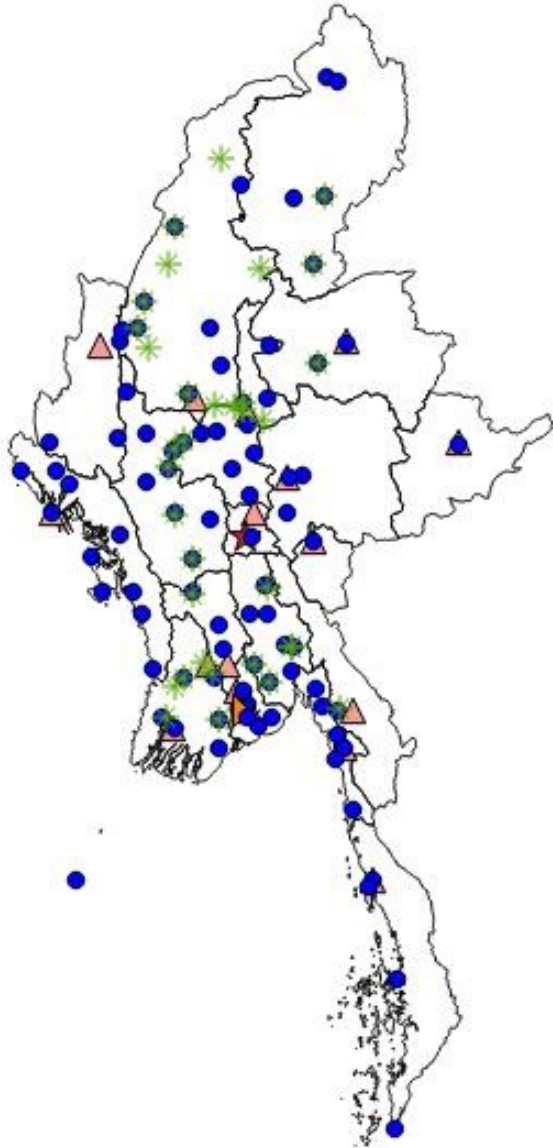
Myanmar Country Report



11 November to 18 November 2022
Japan Meteorological Agency(JMA)

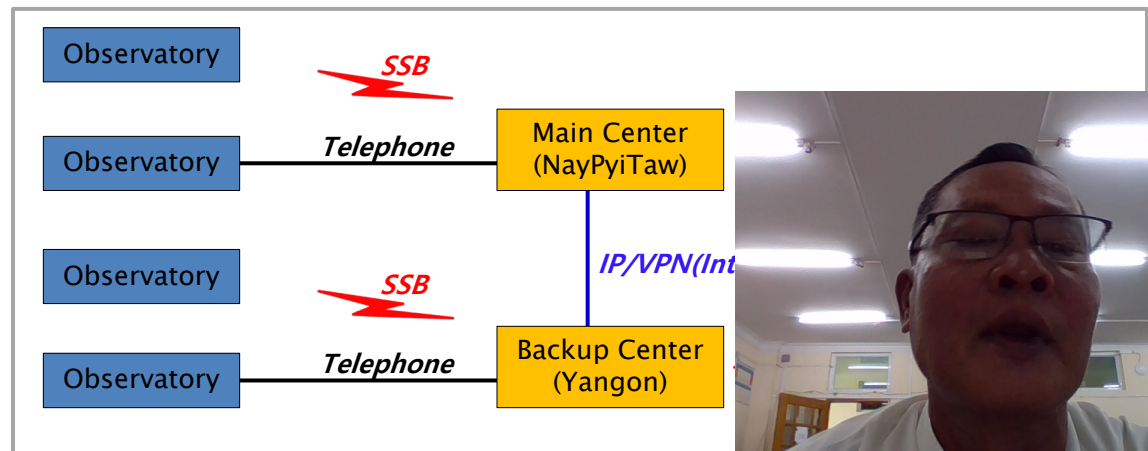


Meteorological Observation Network

- (51) WMO Register (3)hourly Synoptic Observation Stations
- (2) Upper Air Observation Global Meteorological Observation System



	Reporting Stations	- 51
	Meteorological Stations	- 64
	Agro meteorological Stations	- 17
	Aviation Weather Station	- 8
	Hydrological Stations	- 27



By Using Himawari-8 and SATAID



*MTSAT/HRIT Direct
Receiving Antenna*

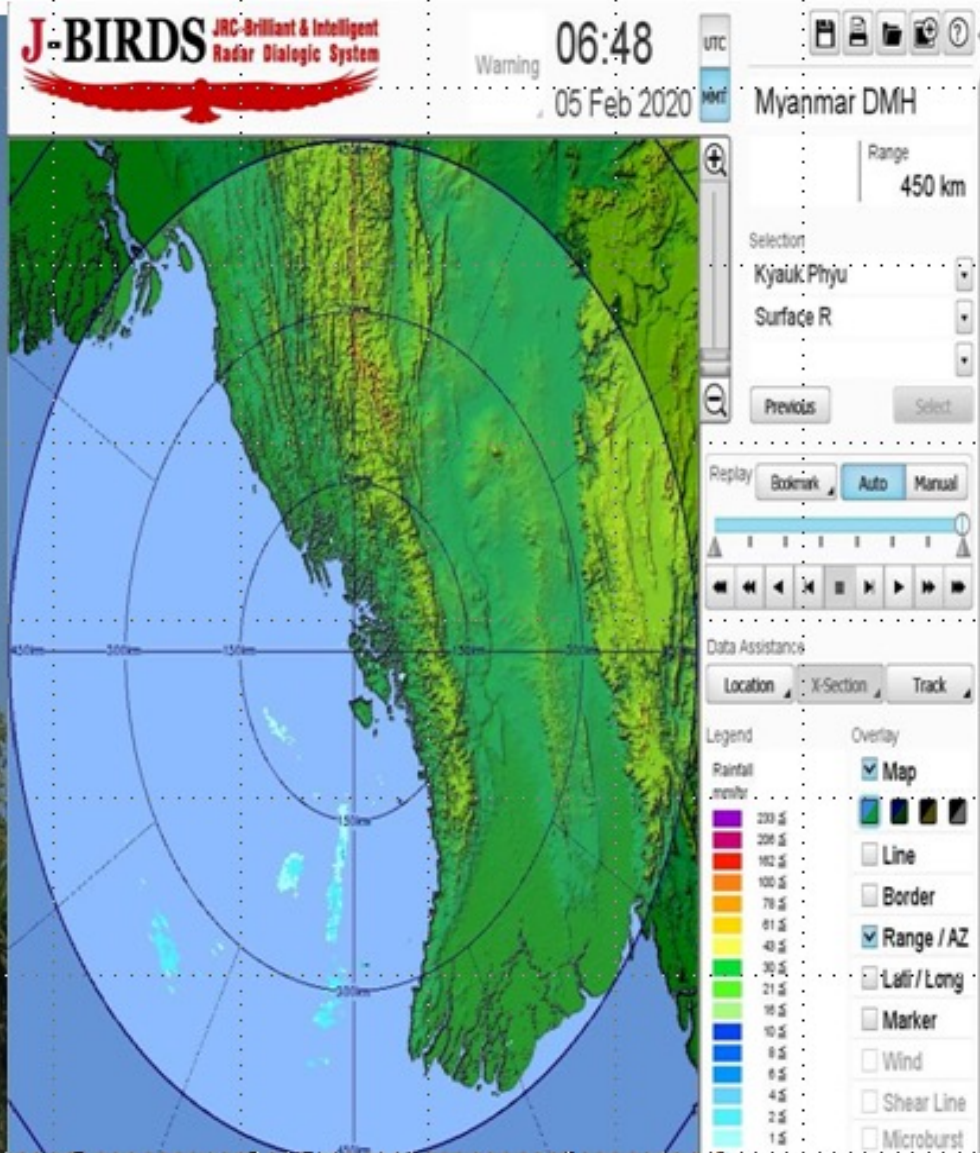
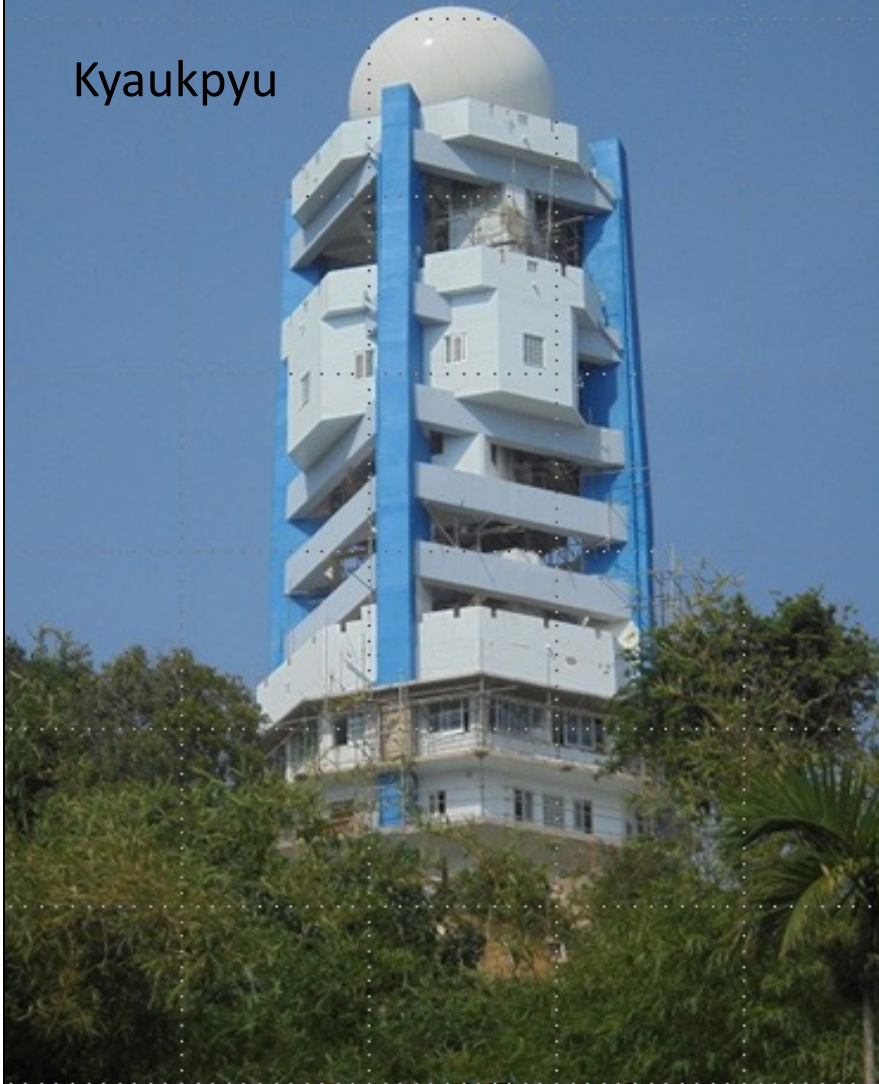
*MTSAT/HRIT Data Processing
System in DMH,*

Installation of MTSAT and SATAID are started from 2010 Dec by JICA . Preparing Himawari 8 (MTSAT) will be received Nover



ကျောက်ဖြူရေဒါ

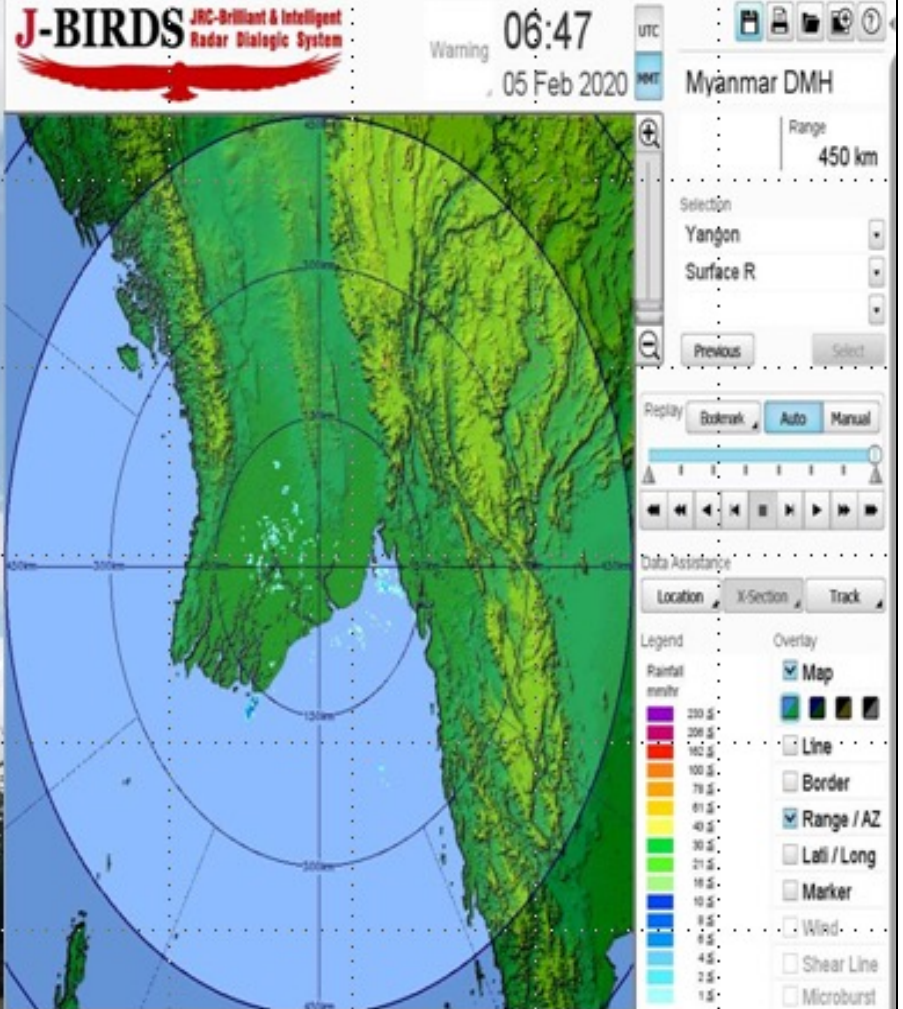
Kyaukpyu



ကျောက်ဖြူရေဒါအား ၂၀၁၅ ခုနှစ် အောက်တိုဘာ (၉) ရက်နေ့တွင် လွှဲပြောင်းပေးအပ်ခဲ့ပါသည်။

ရန်ကုန်ရေဒါ

Yangon



ရန်ကုန်ရေဒါအား ၂၀၁၆ ခုနှစ် အောက်တိုဘာ (၂၅) ရက်နေ့တွင် လွှဲပြောင်းပေးအပ်ခဲ့ပါသည်။

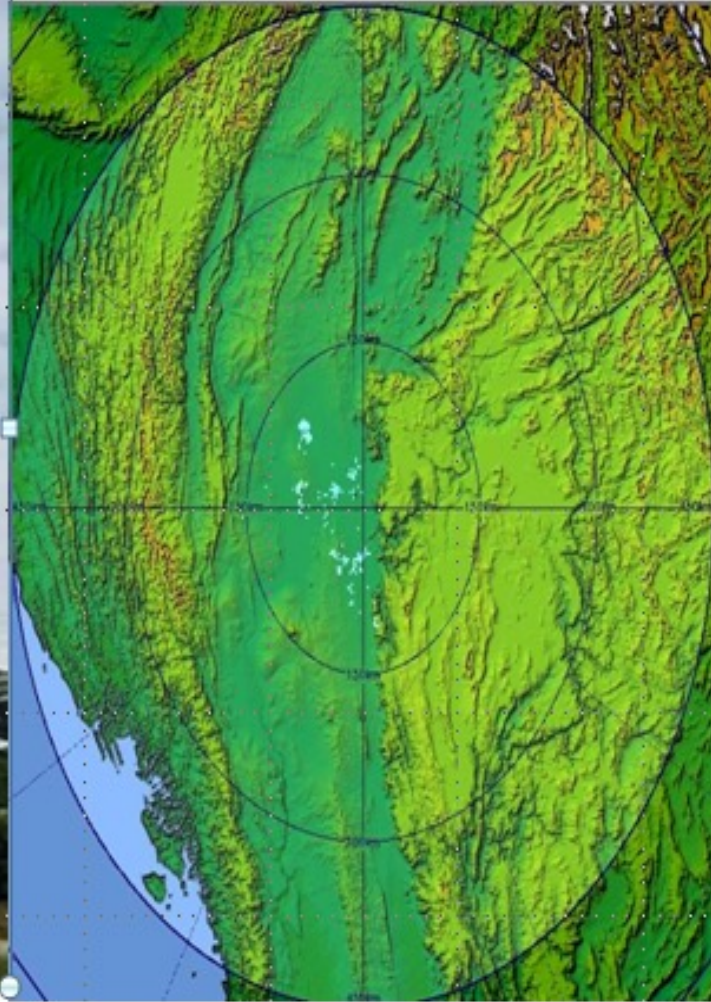
Mandalay



J-BIRDS JRC-Brilliant & Intelligent Radar Dialogic System

Warning 06:45
05 Feb 2020

Myanmar DMH



Range 450 km

Selection: Mandalay, Surface R

Replay: Bookmark, Auto, Manual

Data Assistance: Location, X-Section, Track

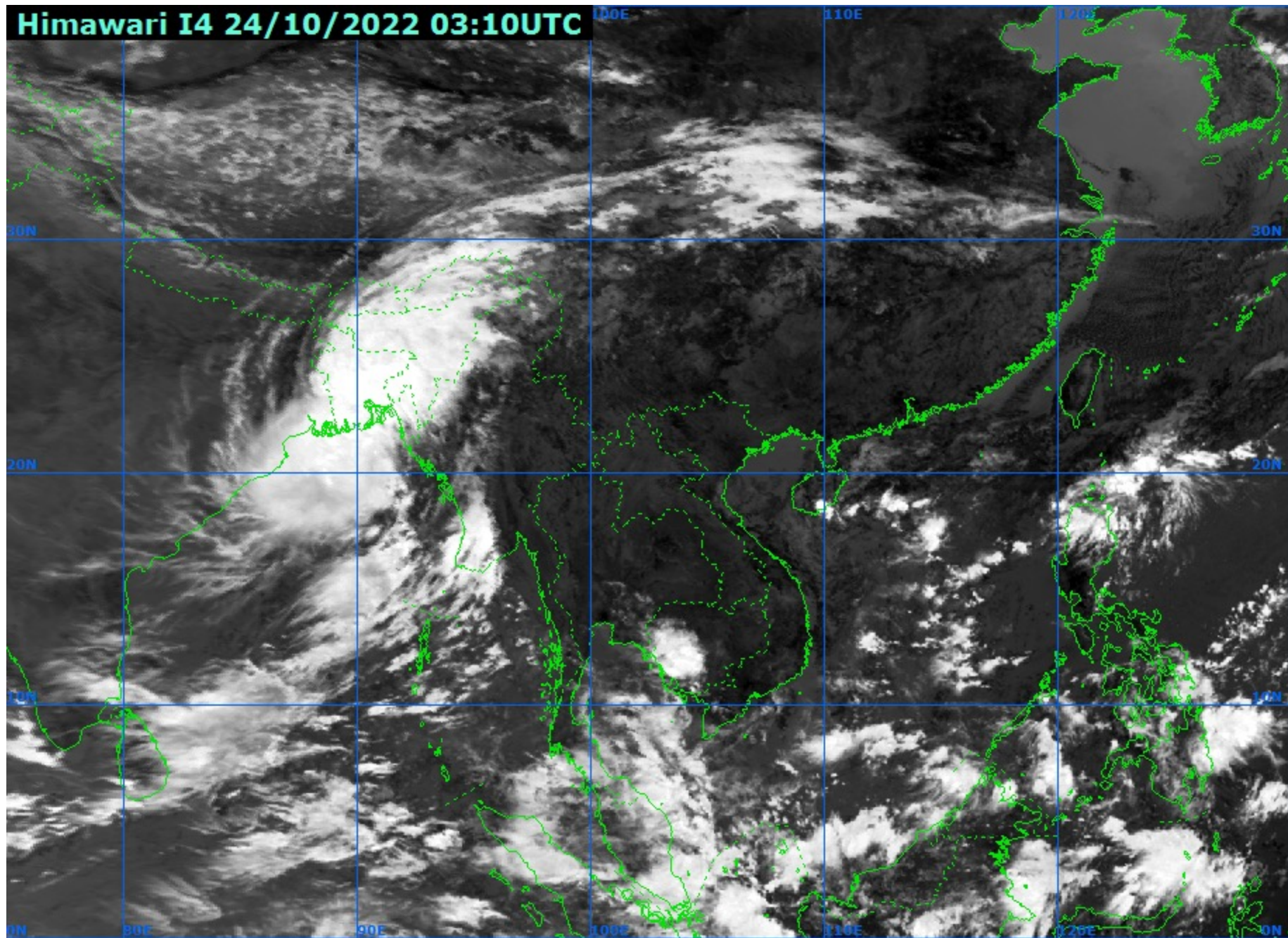
Legend: Rainfall mm/hr (1.5 to 230.0)

Overlay: Map, Line, Border, Range / AZ, Lat / Long, Marker, Wind, Shear Line, Microburst

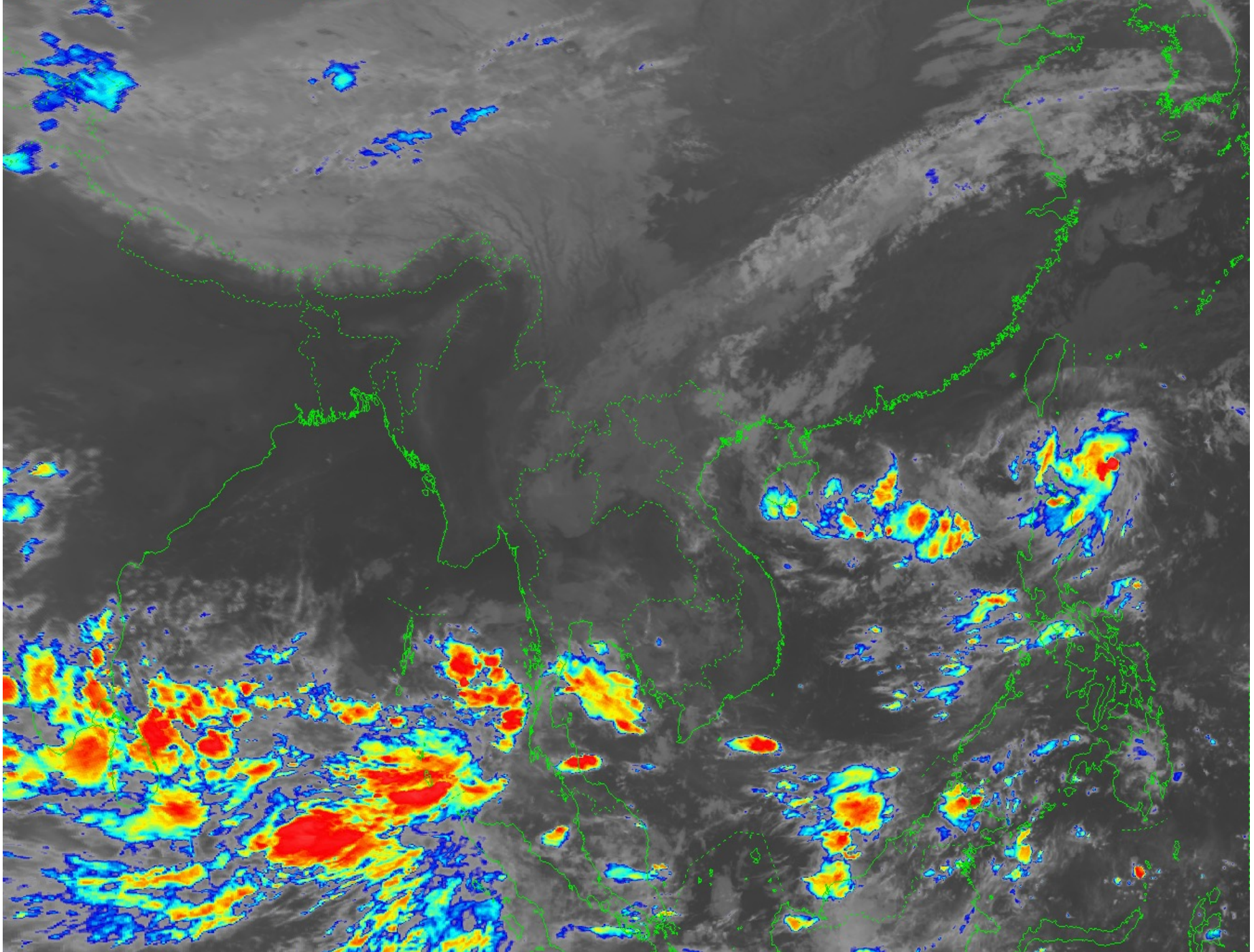
၂၀၁၈ ခုနှစ်၊ ဇွန်လ (၈)ရက်နေ့တွင် လွှဲပြောင်းပေးအပ်ခဲ့ပါသည်။

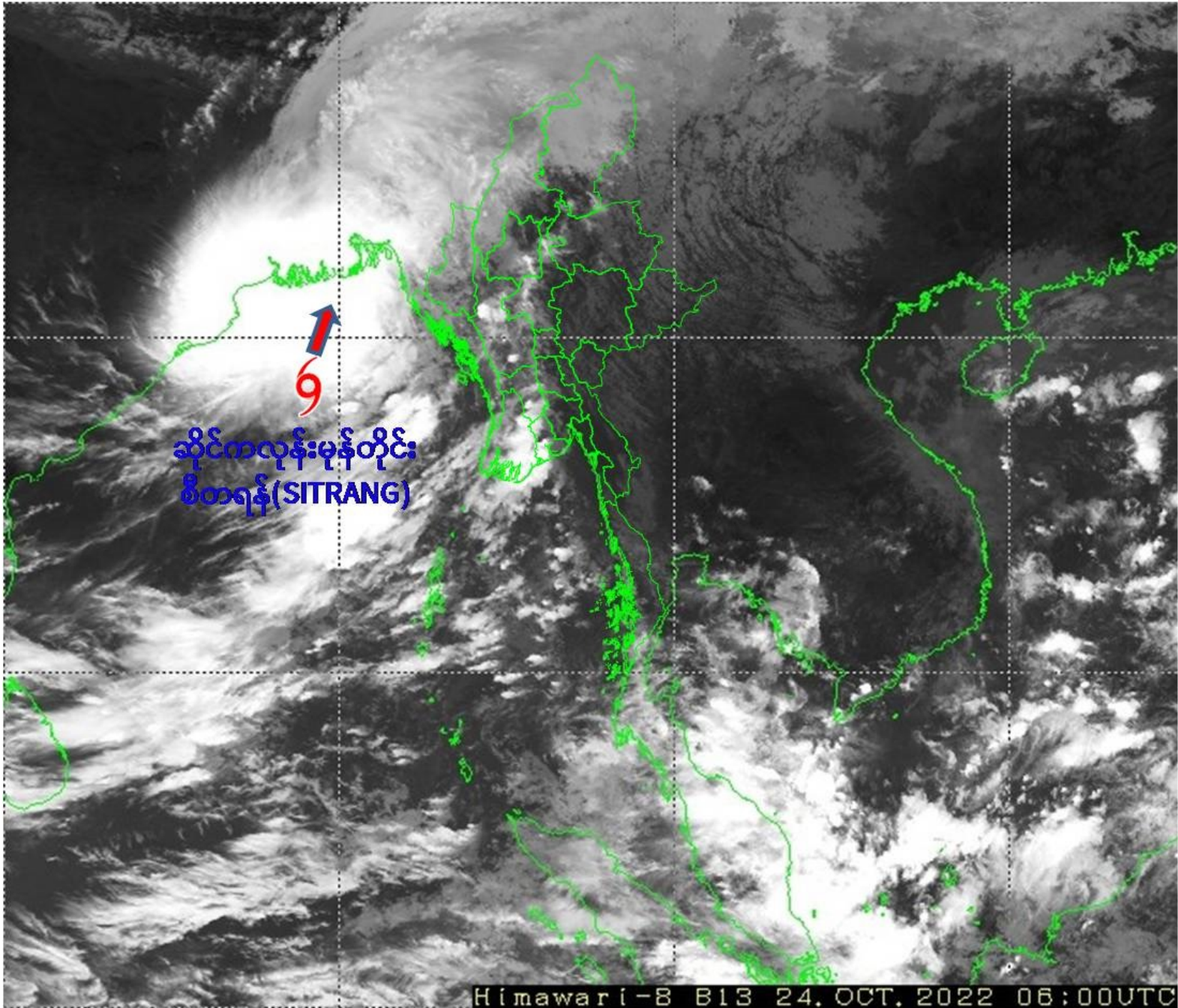
Satellite image for Si-Trang cyclone
(21.10.2022 to 25.10.2022)

Himawari I4 24/10/2022 03:10UTC



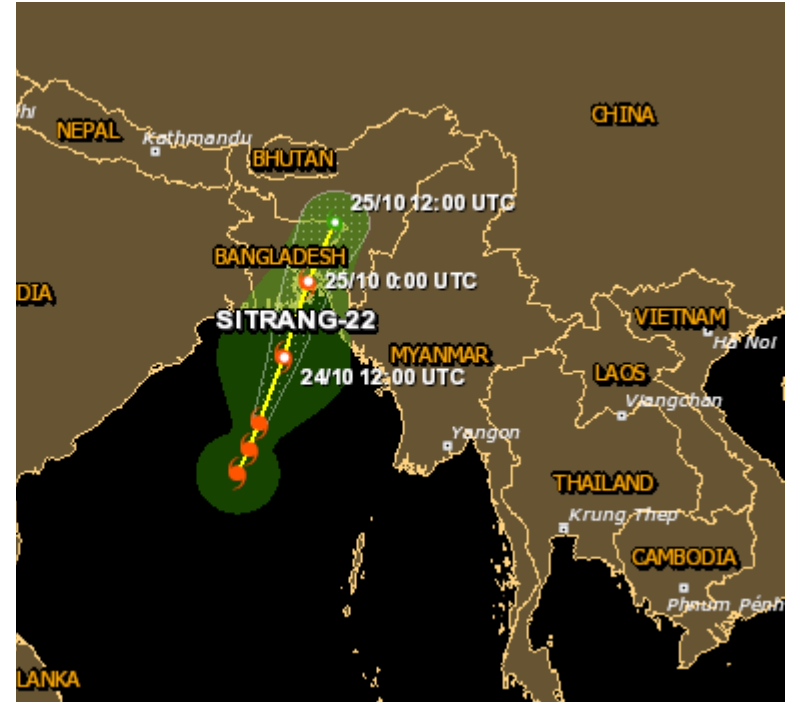
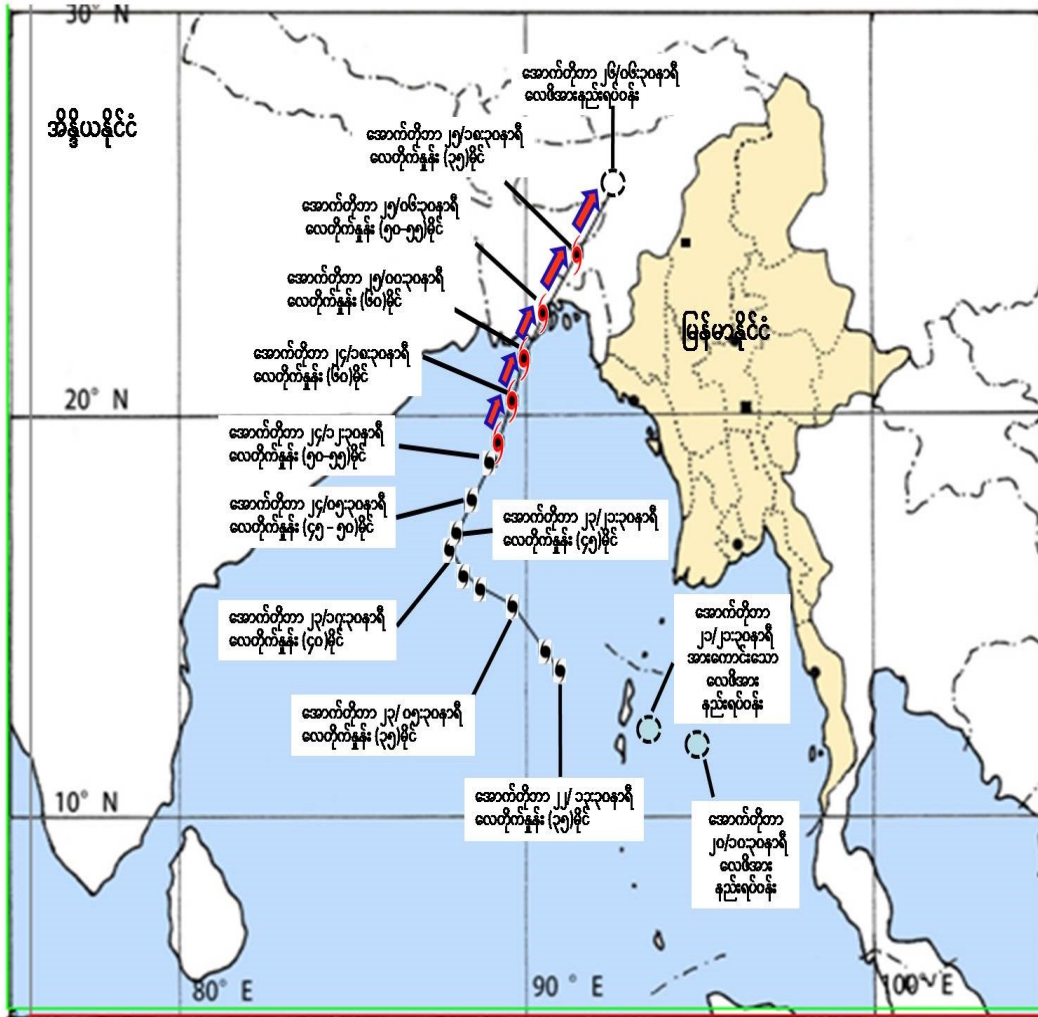
Himawari IR 21/10/2022 00:10UTC





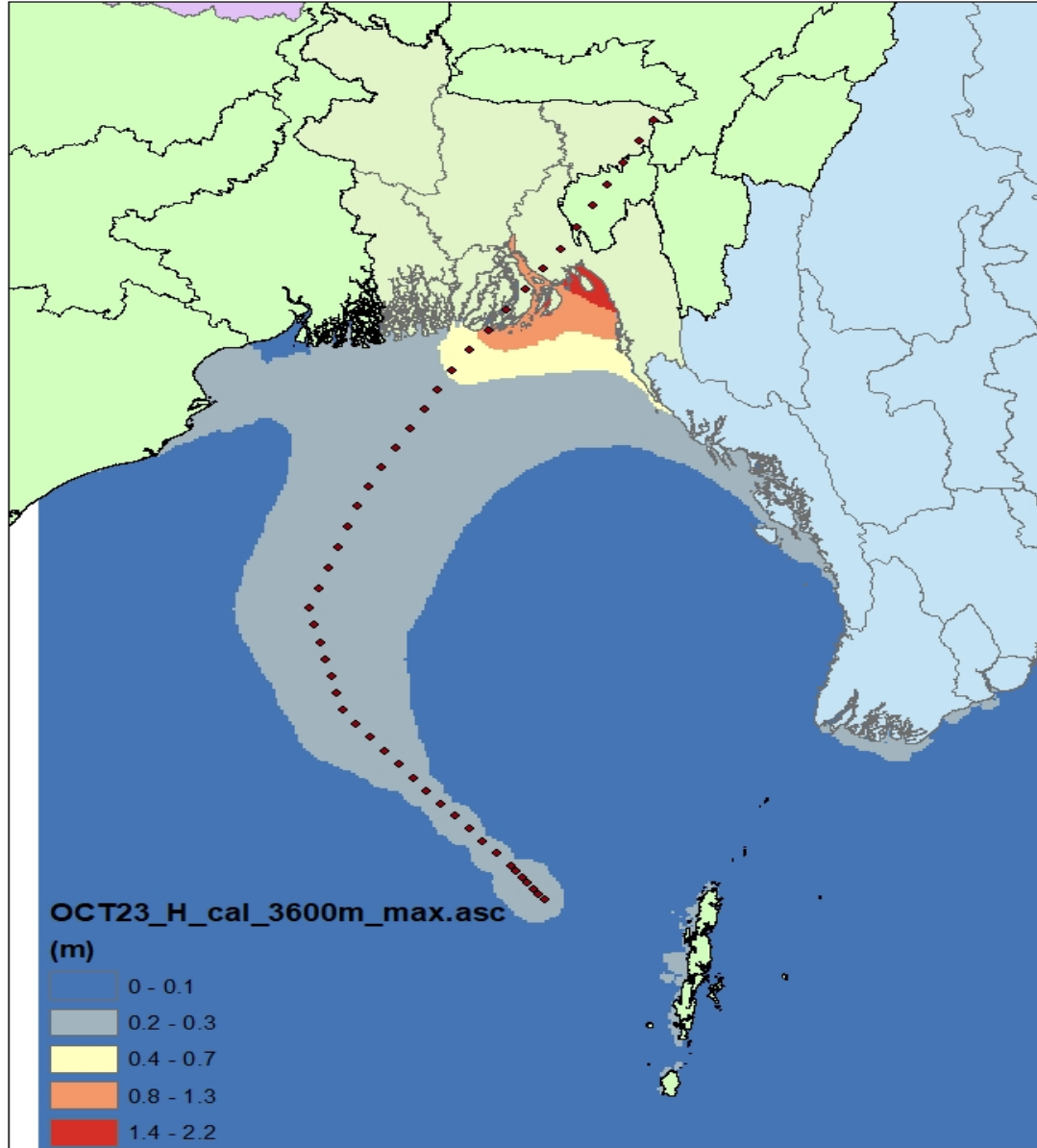
ဆိုင်ကလုန်းမုန်တိုင်း
စီတရန် (SITRANG)

၂၄.၁၀.၂၀၂၂ ရက်နေ့ (၁၂:၃၀)နာရီအချိန် တိုင်းထွာချက်အရ ဆိုင်ကလုန်းမုန်တိုင်း “စီတရန် (SITRANG)” လမ်းကြောင်းပြမြေပုံ

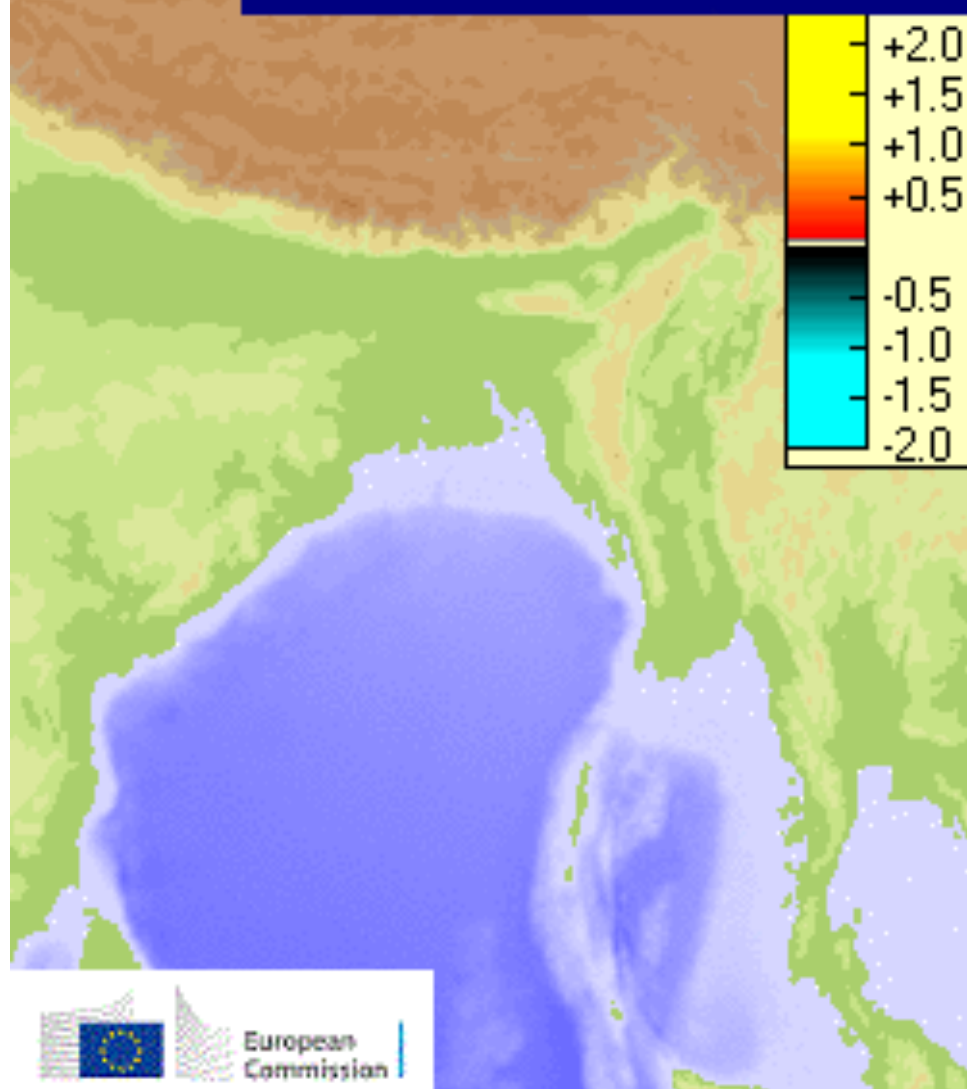


မုန်တိုင်းဒီရေခဲနံ့မုန်းချက်

Icham(DMH)



Time=00:00



Provinces

Region Province	Country	Population in Tropical Storm or higher strength
West Bengal	India	1.7 million people
Khulna	Bangladesh	7.2 million people
Barisal	Bangladesh	8.1 million people
Arakan State	Myanmar	100000 people
Chittagong	Bangladesh	42.2 million people

NMHS Activities

- ✓ DMH actively cooperate with the regional partners- WMO, Norwegian Government, TMD, JMA, JICA, KOICA, KMA, CMA. UNESCAP, IMD, ADPC, and RIMES to develop the skilled man power in weather forecasting.
- ✓ JMA, JICA, KOICA, KMA, RIMES, TMD and ADPC provide technical assistance and instruments to improve weather forecast, climate and climate change, disaster risk reduction and communication.
- ✓ Strengthening Capacity Development Program with Norwegian Meteorological Institute and technical assistance from ADPC.
- ✓ Establishment of Master Plan for the Advancement of National Meteorological System in Myanmar with KMIPA (have been installed 30 AWOS in the whole country)