

# The Second Asia/Oceania Meteorological Satellite Users' Conference

The Japan Meteorological Agency (JMA) is pleased to announce the Second Asia/Oceania Meteorological Satellite Users' Conference to take place from 6 to 9 December, 2011, in Tokyo, Japan.

## Objectives

The Asia and Oceania regions are frequently affected by severe natural phenomena such as tropical cyclones, torrential monsoons, volcanic eruptions, yellow sand storms, floods, sea ice and wildfires. In addition, the importance of monitoring the climate and the environment is increasing, prompting enhanced global interest in the field. In this regard, meteorological and earth observation satellites provide frequent and extensive observational information for use in disaster prevention and climate monitoring/diagnostics, and are indispensable in today's world.

The history of meteorological satellites over Asia and Oceania began with the launch of the Geostationary Meteorological Satellite (GMS) in 1977. Now, China, Europe, India, Japan, the Republic of Korea, the Russian Federation and the United States all operate meteorological and climate monitoring satellites over Asia and Oceania, as part of the Global Observing System (GOS) promoted by the World Meteorological Organization (WMO), which contributes to the Global Earth Observation System of Systems (GEOSS) coordinated by the Group on Earth Observations (GEO).

To further enhance exchanges on application techniques among satellite data users as well as to advance satellite observation technologies and promote synergetic development related to meteorological satellites, the second Asia/Oceania Meteorological Satellite Users'

Conference will be held in Japan in the footsteps of the successful first conference hosted by the China Meteorological Administration (CMA) last year.

## Conference Topics

- Current and future meteorological satellite programs
- Facilitation of data access and utilization
- Atmospheric parameters derived from satellite observations
- Application of satellite data to weather analysis and disaster monitoring
- Application of satellite data to numerical weather prediction
- Application of satellite data to climate and environmental monitoring
- Land surface and ocean parameters derived from satellite observations
- Capacity building and training activities

## Call for Papers

Those whose professional fields relate to the above themes and who wish to present at the conference are invited to register. The registration form can be downloaded from the webpage at

<http://mscweb.kishou.go.jp/second/1stannounce.htm>.

The form should include author information, title, abstract

and presentation type (verbal or poster), and should be e-mailed to the Local Organizing Committee at

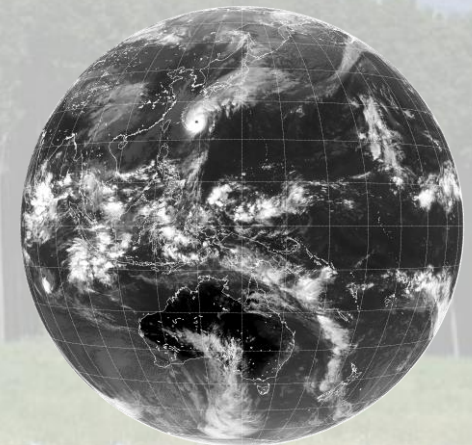
Yasushi Izumikawa (Mr.) or Yuki Kosaka (Mr.)  
[asuc2-cp@dpc.kishou.go.jp](mailto:asuc2-cp@dpc.kishou.go.jp).

The language of the conference is English. The abstracts should be no longer than one page (A4). In cases where there are multiple authors, we kindly ask for a single coordinated response. To register more than one author, please fill out and submit a form for each.

The deadline for submission is **9 September, 2011. (Extended)**

Conference fee: FREE

Abstracts will be reviewed for inclusion in the conference programme. Authors may be asked to switch verbal presentations to poster presentations, or vice versa, if considered more appropriate. Selected authors will be notified via e-mail around September 2011, and their abstracts will be posted on the conference website.





Tokyo Sky Tree – a new landmark under construction



Senso-ji



Rainbow Bridge



## Japan Travel Information

Most of Japan's regions including Tokyo were unaffected by the 2011 off the Pacific coast of Tohoku Earthquake occurred on 11 March. Japan travel information is available on the Webpage of the Japan National Tourism Organization (JNTO)

<http://www.jnto.go.jp/eq/eng/>

## Second Announcement

The second announcement will be posted around September 2011 on the conference website at:

<http://mscweb.kishou.go.jp/second/index.htm>.

The preliminary program, details of visa support/accommodation and general information will be provided with the second announcement.

## Local Organization Committee

Japan Meteorological Agency  
1-3-4 Otemachi, Chiyoda-ku  
Tokyo 100-8122, Japan  
<http://www.jma.go.jp/jma/indexe.html>

Meteorological Satellite Center (JMA)  
3-235 Nakakiyoto, Kiyose  
Tokyo 204-0012, Japan  
<http://mscweb.kishou.go.jp/>

E-mail: [asuc2-cp@dpc.kishou.go.jp](mailto:asuc2-cp@dpc.kishou.go.jp)



## History

### 1st conference

1 to 2 November, 2010  
Beijing, China  
Hosted by the China Meteorological Administration (CMA)  
[http://www.nsmc.cma.gov.cn/NewSite/NSMC\\_EN/Contents/100409.html](http://www.nsmc.cma.gov.cn/NewSite/NSMC_EN/Contents/100409.html)

# The Second Asia/Oceania Meteorological Satellite Users' Conference

Tokyo, Japan  
6 – 9 Dec. 2011

First Announcement  
and  
Call for Papers