

Climate Outlook for 2014-15 Winter Over Korea

LEE Seongeun , KIM Jeongsun, KIM Eunmi

*Climate Prediction Division
Korea Meteorological Administration*



Contents



1. Current Conditions

2. ENSO Prediction

3. Dynamic Predictions

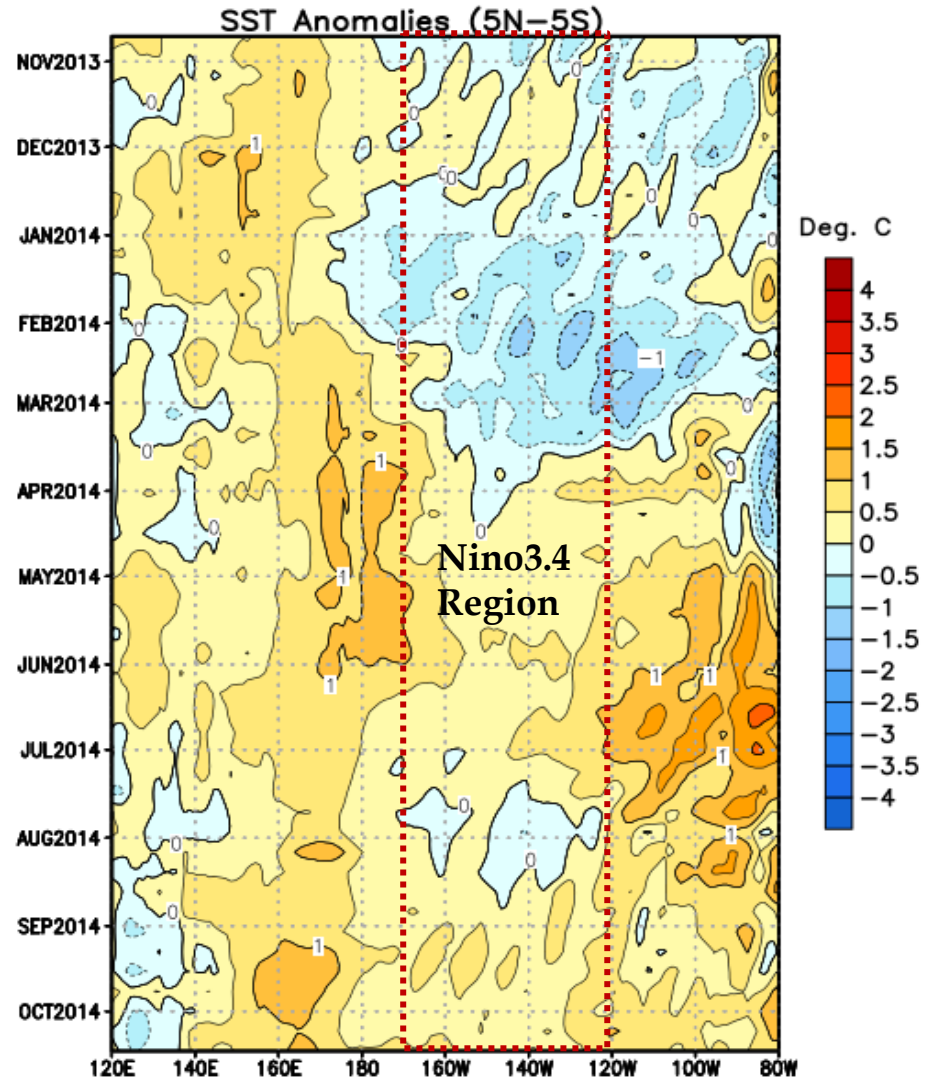
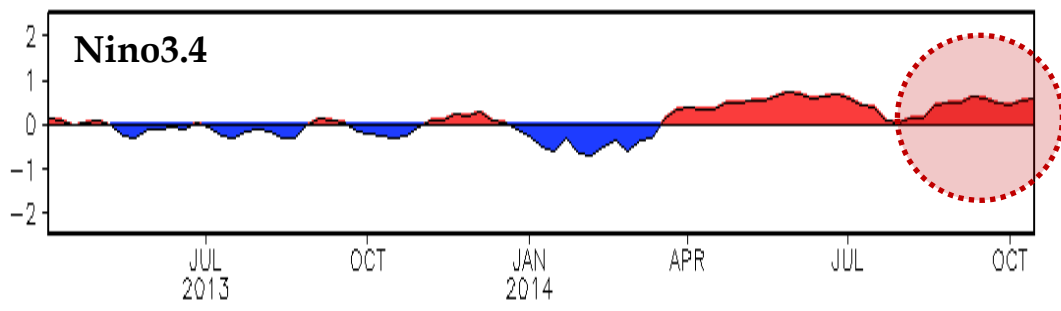
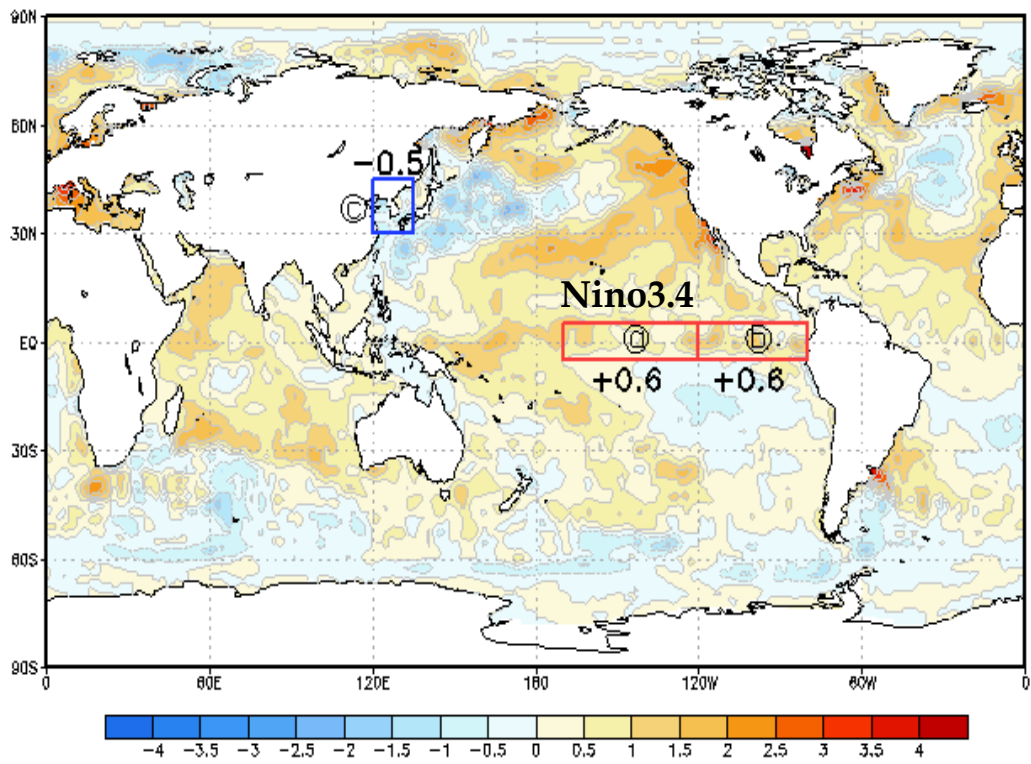
4. Summary

1. Current Conditions

A horizontal banner with a blue gradient background. On the right side, there are several overlapping, light blue circular arcs that create a sense of motion or a stylized globe.

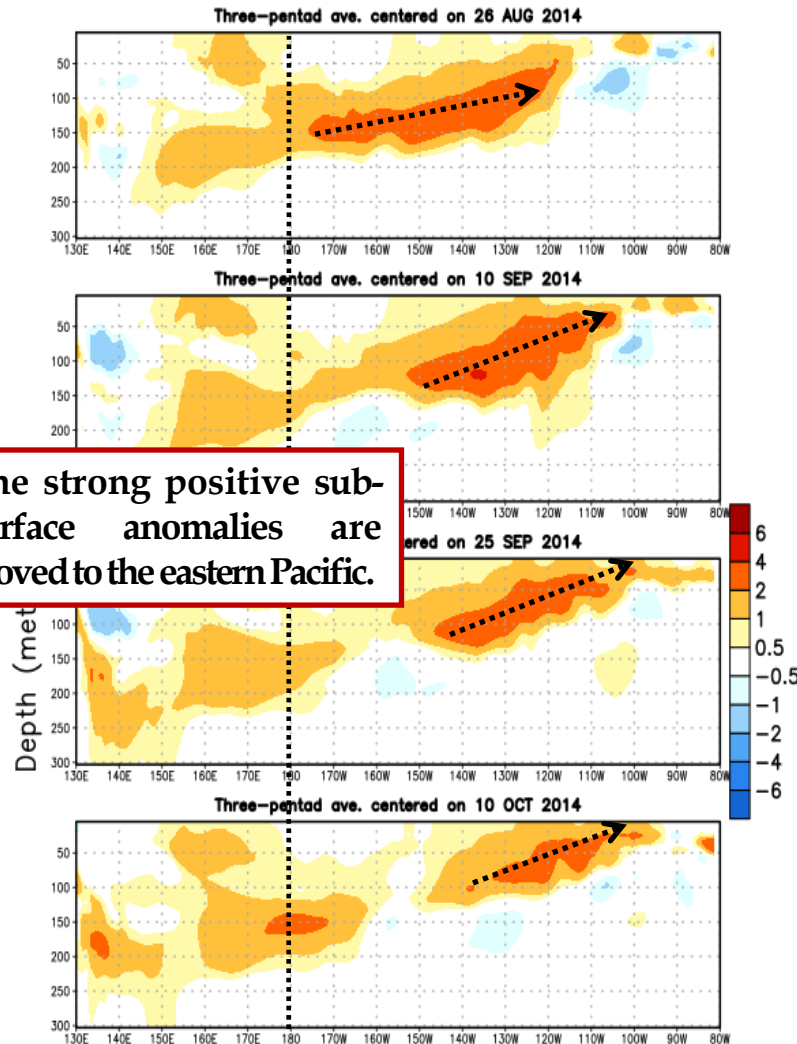
Sea Surface Temperature (SST)

12~18 October 2014



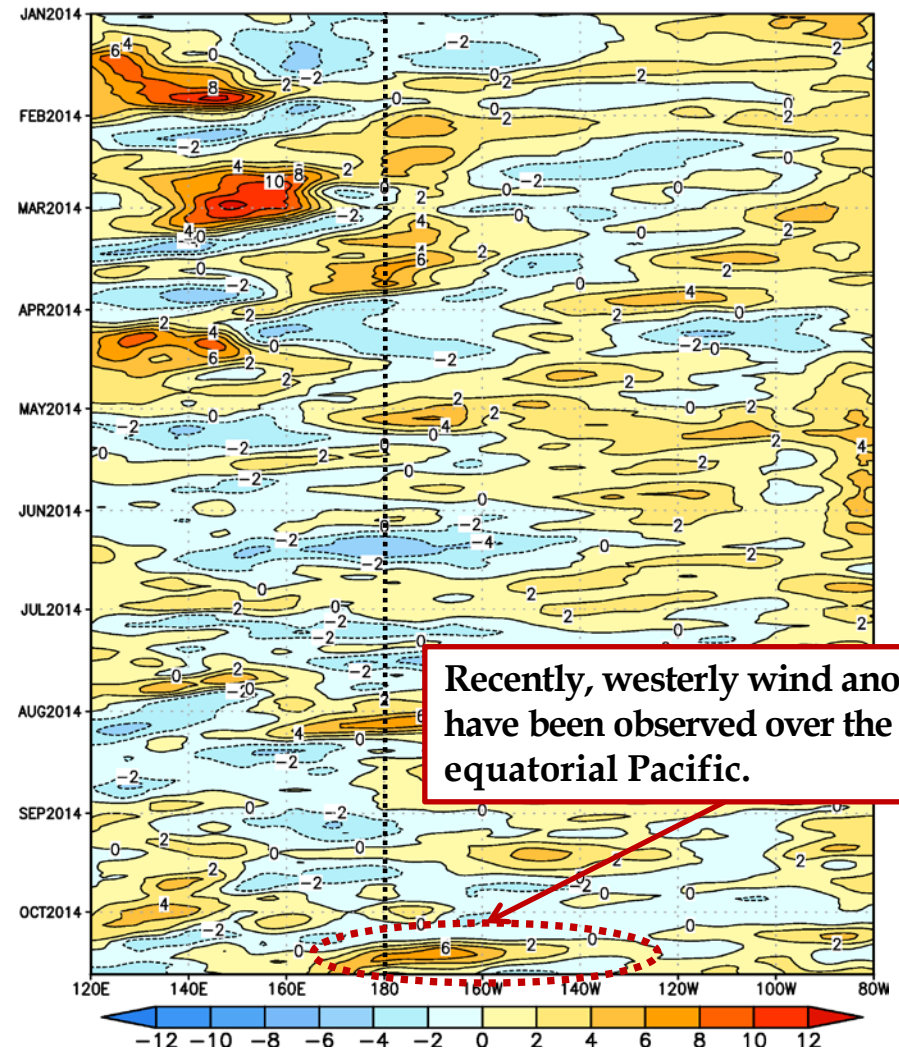
Sub-surface Temperature & 850hPa Zonal wind

EQ. Subsurface Temperature Anomalies (deg C)



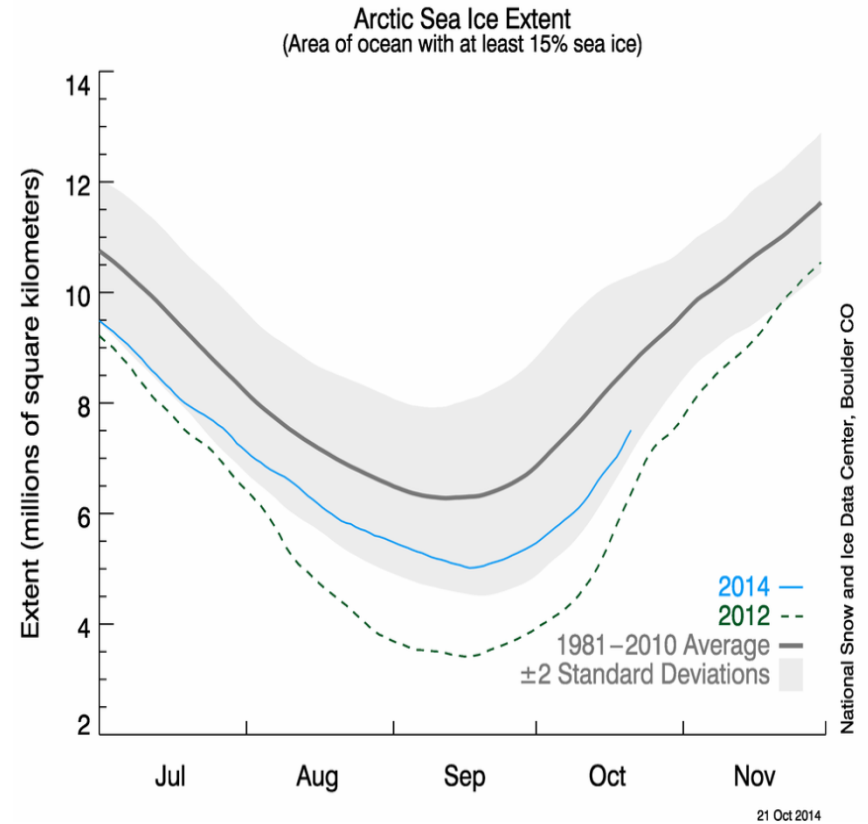
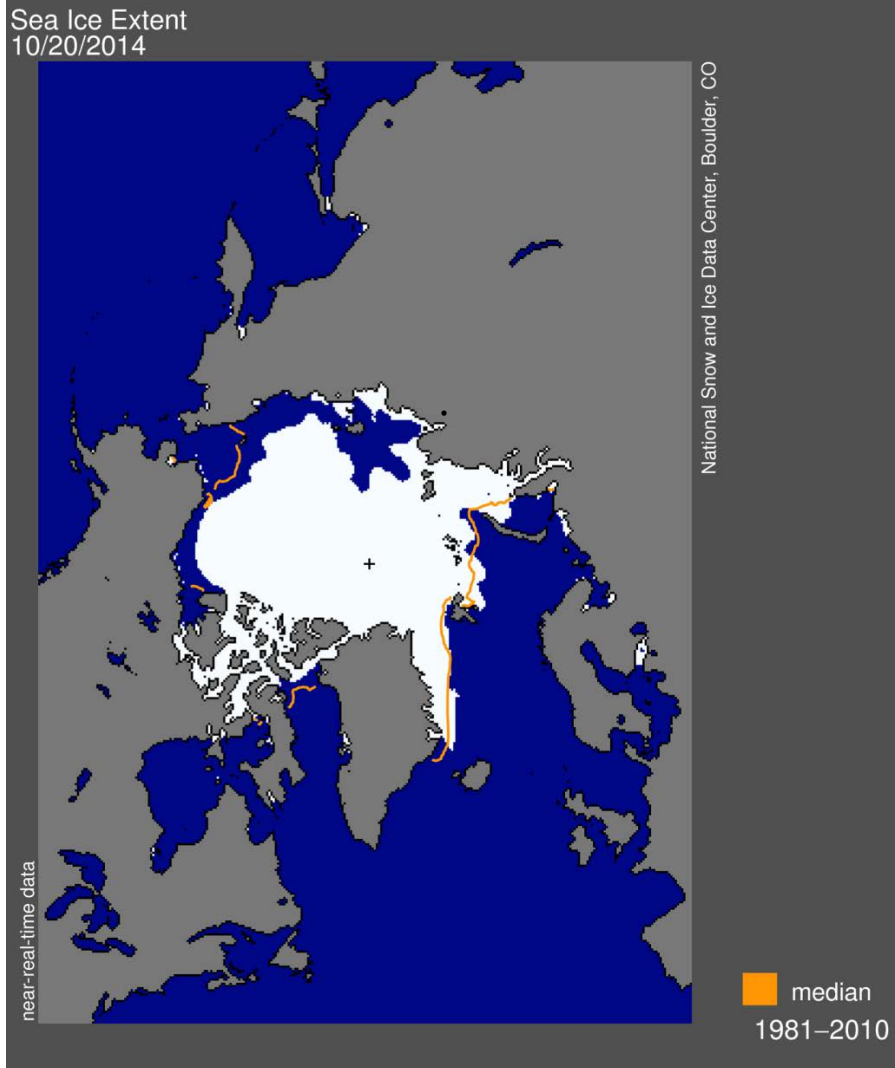
The strong positive sub-surface anomalies are moved to the eastern Pacific.

850hPa U-wind Anomalies (5°S~5°N)



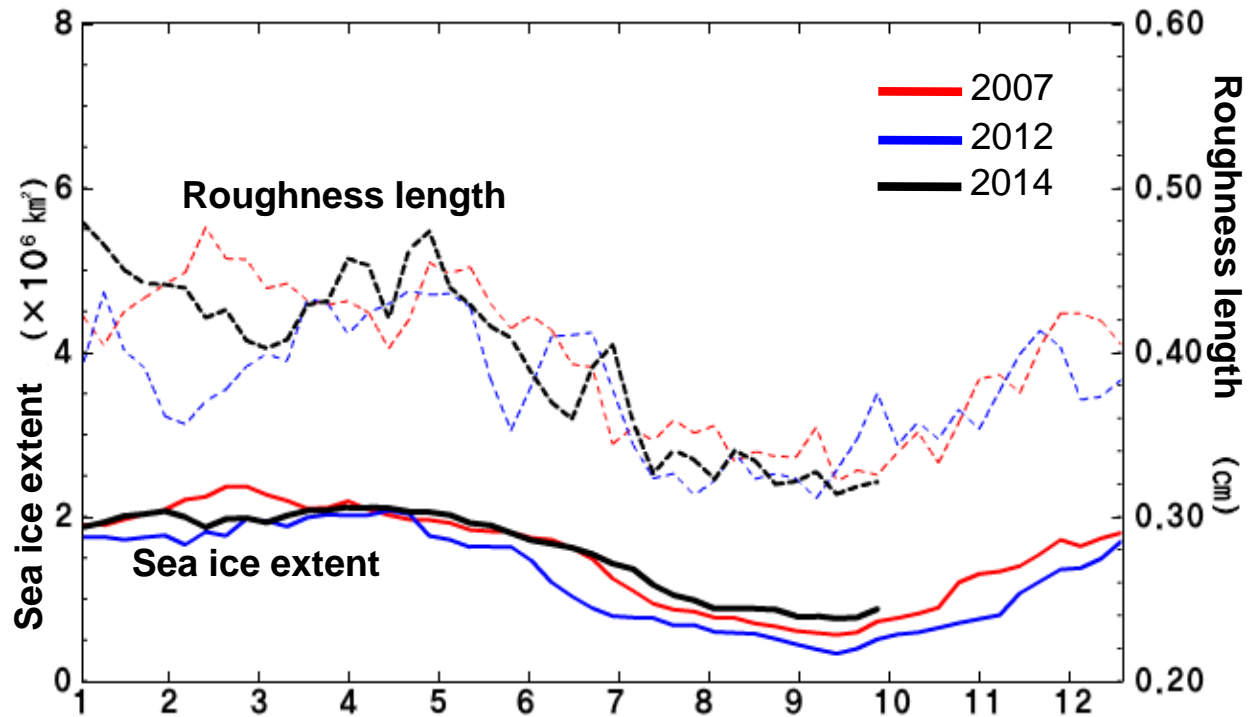
Recently, westerly wind anomalies have been observed over the central equatorial Pacific.

Arctic Sea Ice



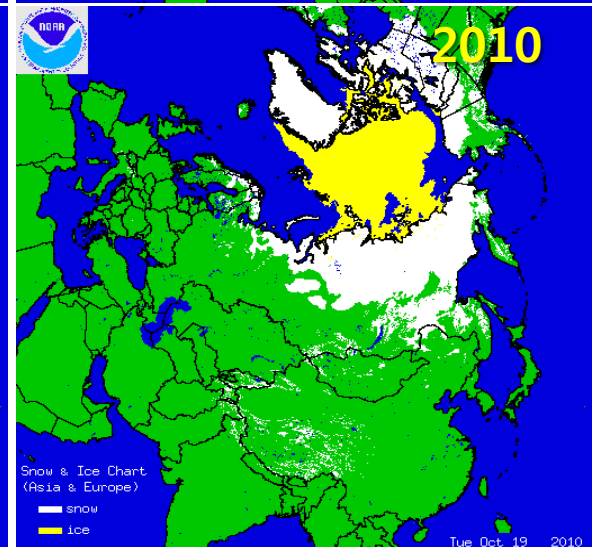
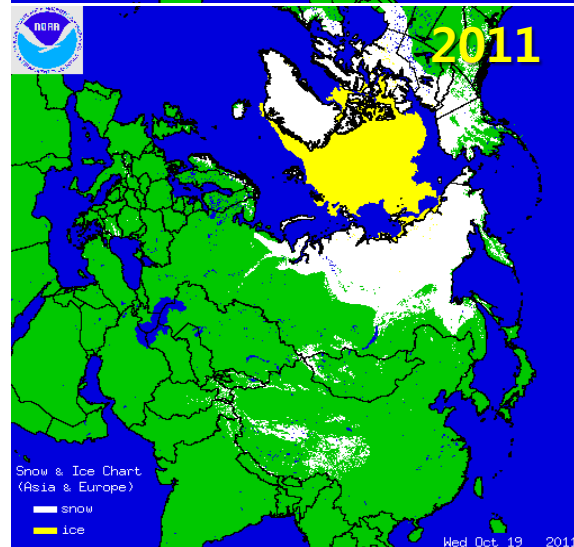
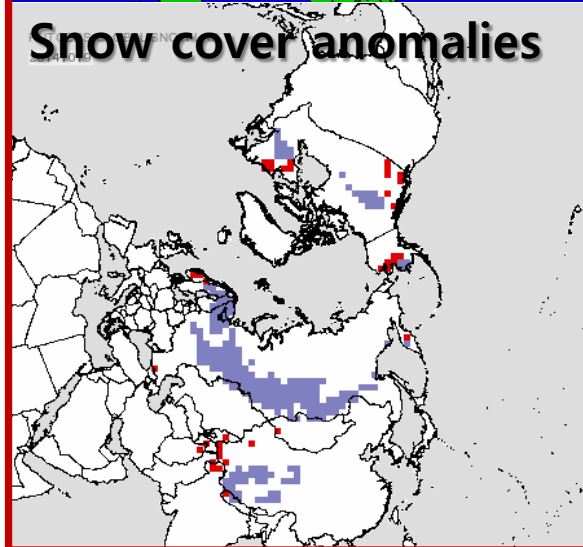
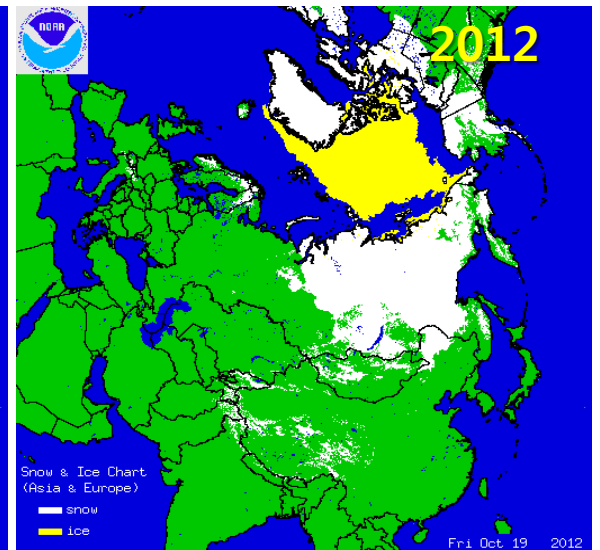
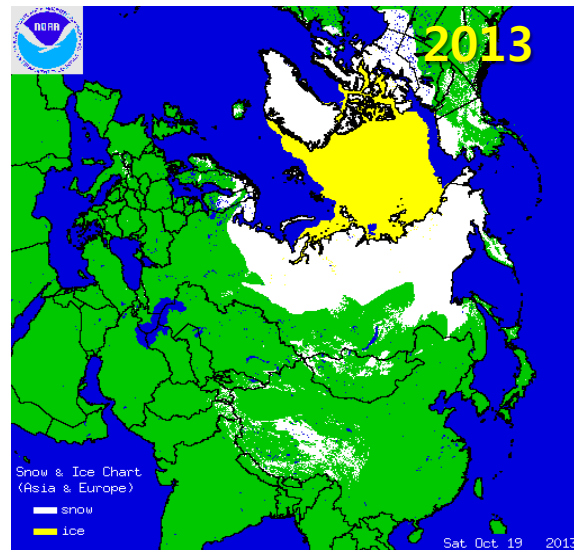
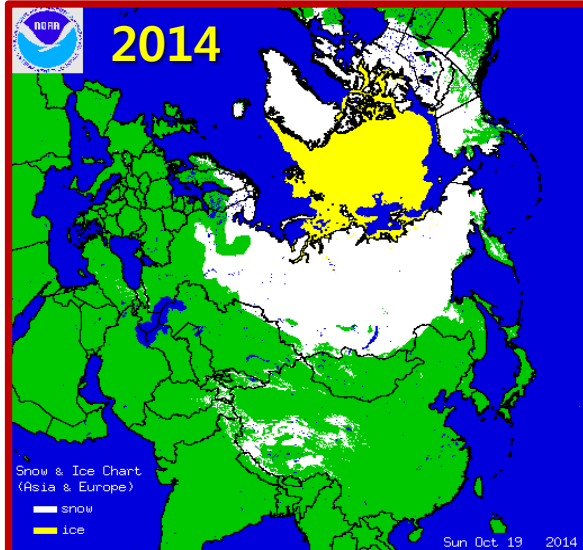
- In 2012 year, the Arctic sea ice was the lowest extend since 1979, which was the one of factors causing cold winter.

Arctic Sea Ice (Barents Sea)



Eurasian Snow Cover

Oct. 19

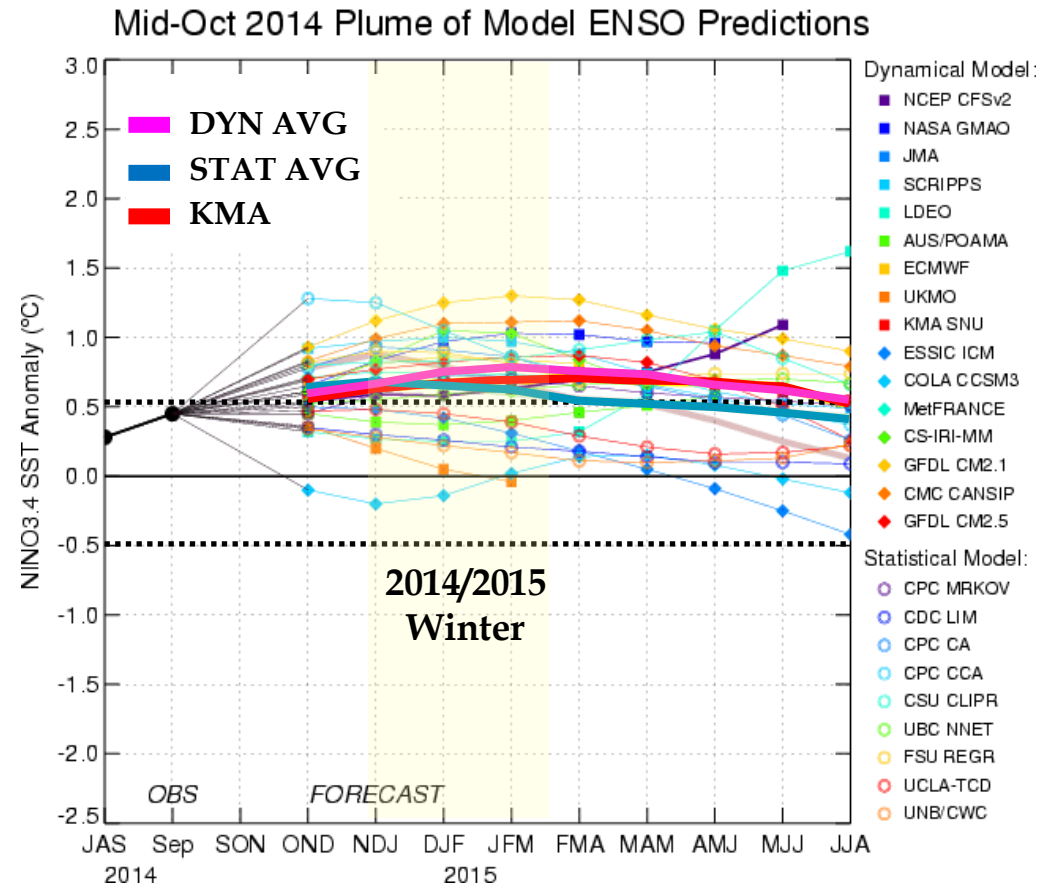
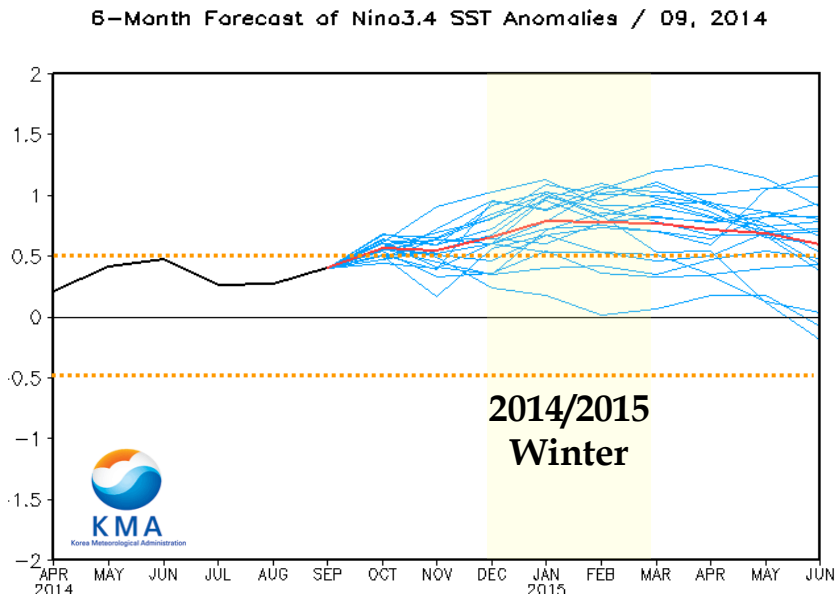


2. ENSO Prediction



ENSO Prediction

Model Predictions for SST Anomalies in Nino 3.4

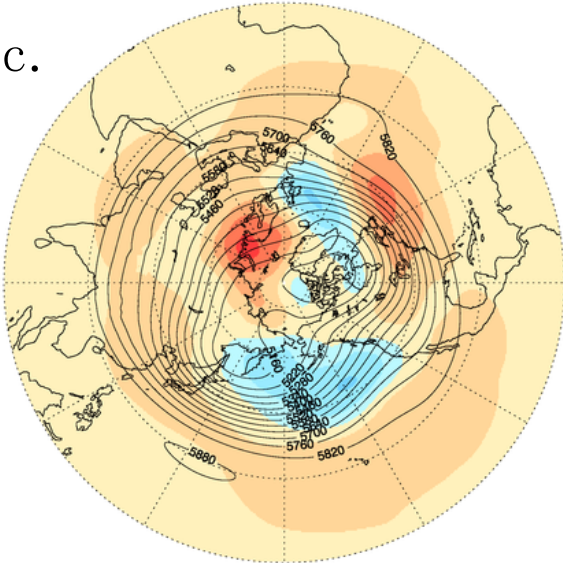


3. Dynamic Model Predictions (GloSea5, WMO LC-LRFMME)

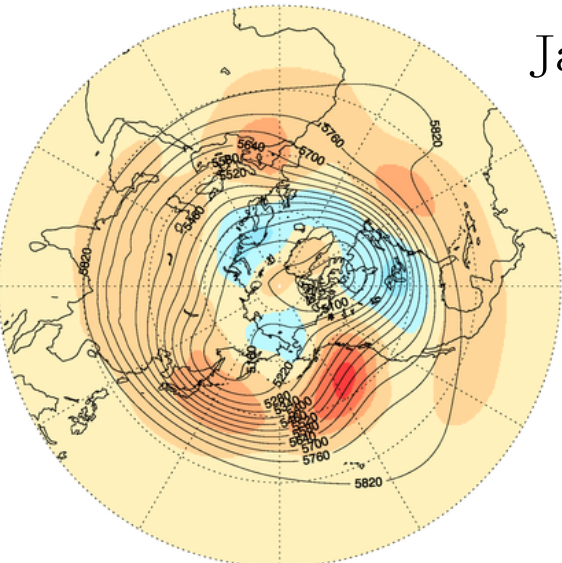


500hPa GPH Anomalies for DJF(GloSea5)

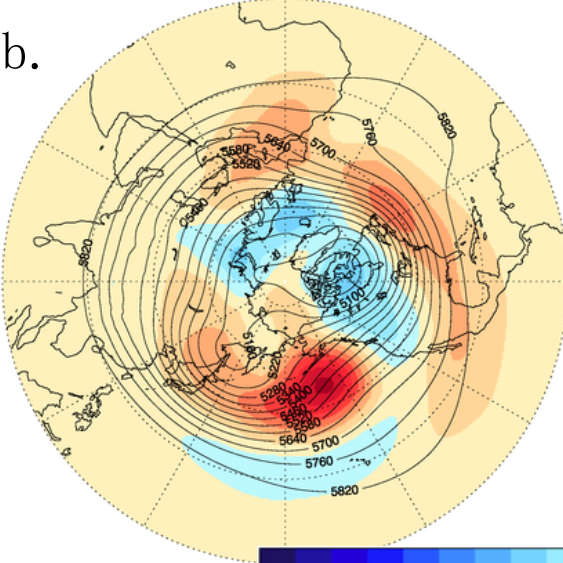
Dec.



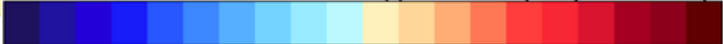
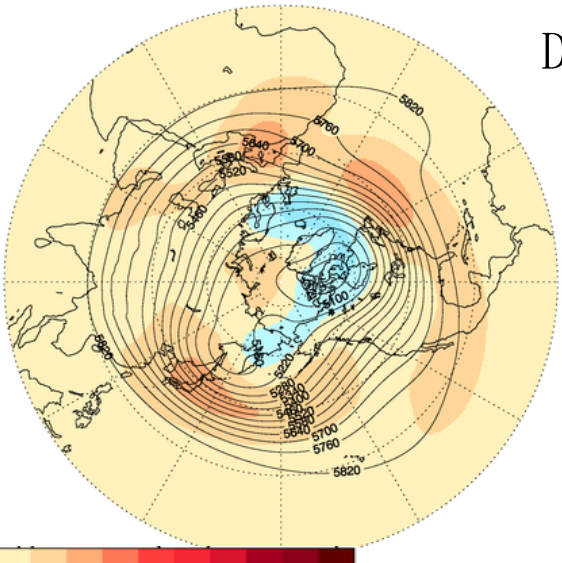
Jan.



Feb.



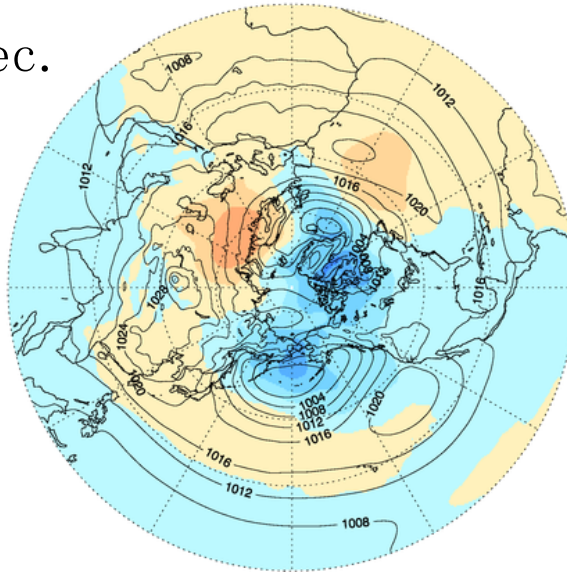
DJF



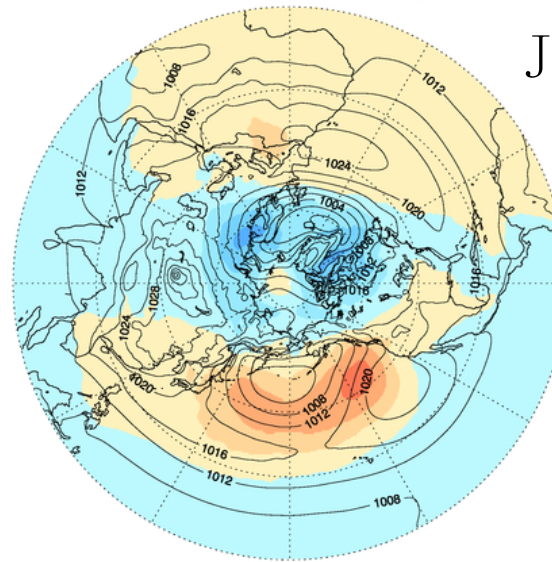
-80 -60 -40 -20 0 20 40 60 80

Sea Level Pressure Anomalies for DJF(GloSea5)

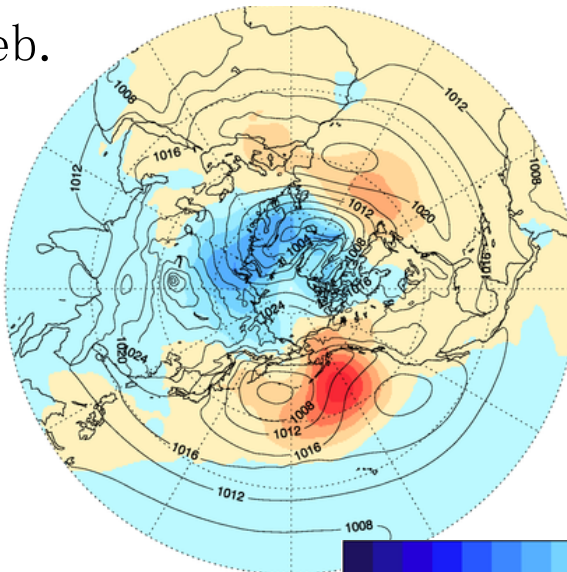
Dec.



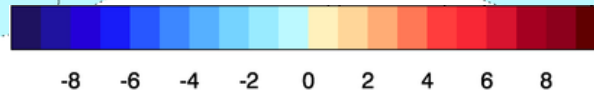
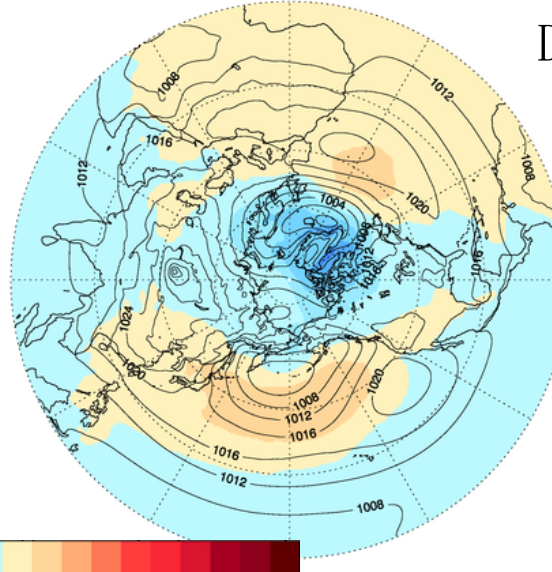
Jan.



Feb.

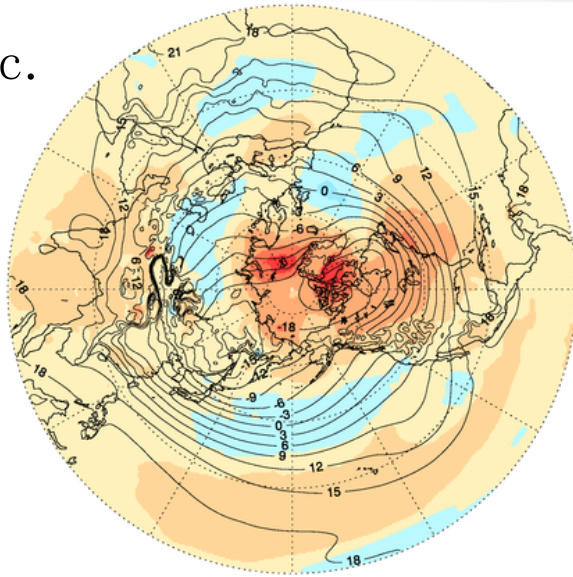


DJF

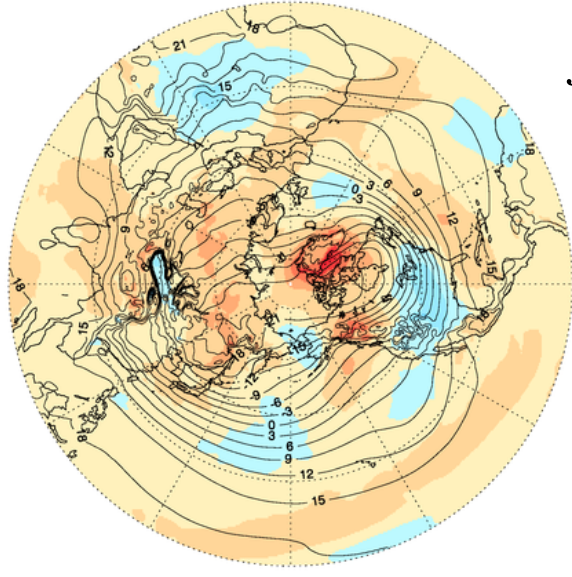


850hPa Temperature Anomalies for DJF(GloSea5)

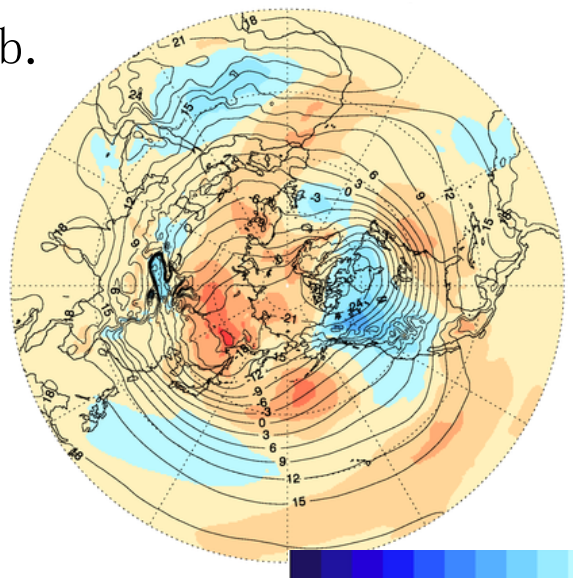
Dec.



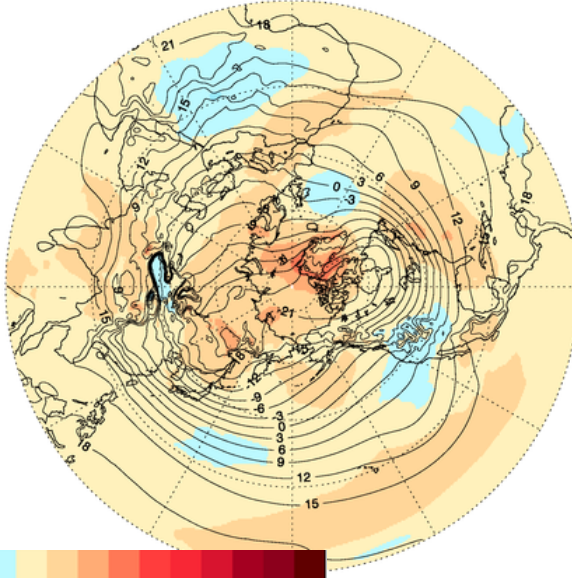
Jan.



Feb.

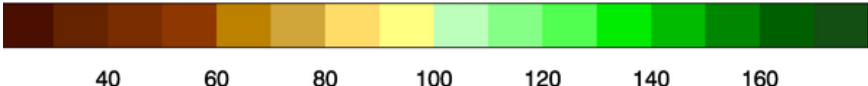
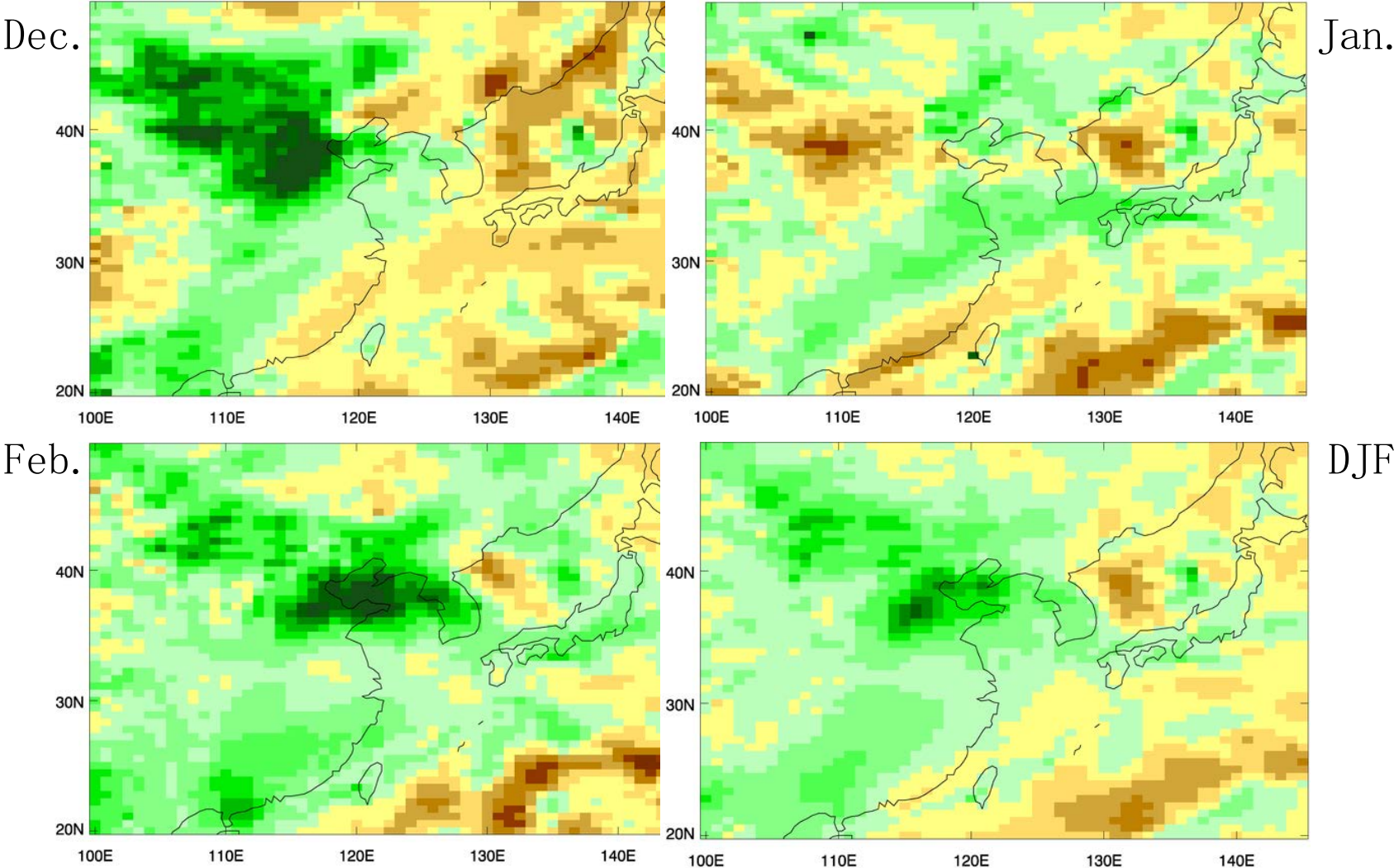


DJF



-4 -3 -2 -1 0 1 2 3 4

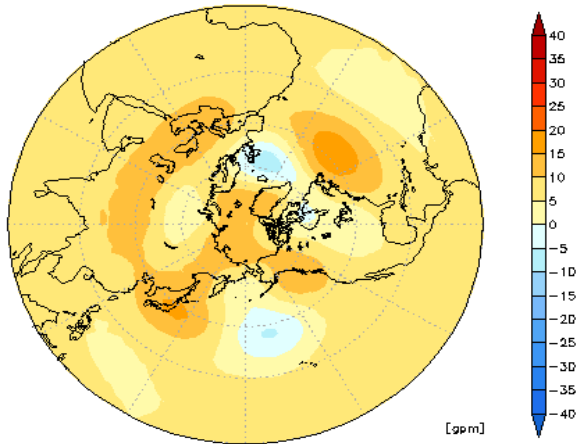
Precipitation ratio for DJF(GloSea5)



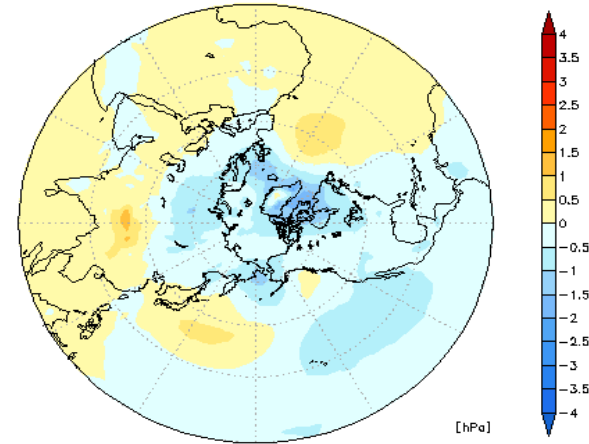
WMO LC MME prediction for DJF

GPC_Seoul/Washington/Melbourne/Montreal(cancm3/cancm4)/ECMWF/EXETER/Toulouse/CPTEC

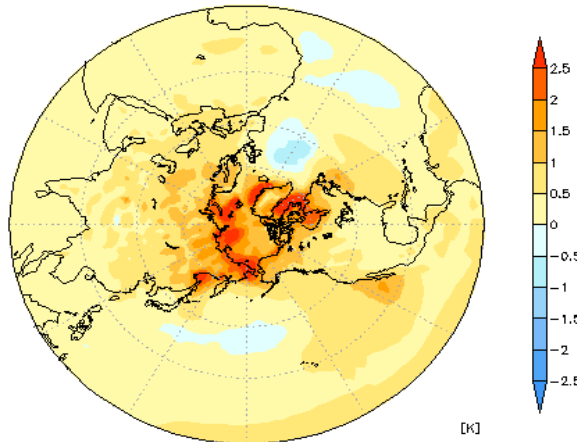
500hPa GPH



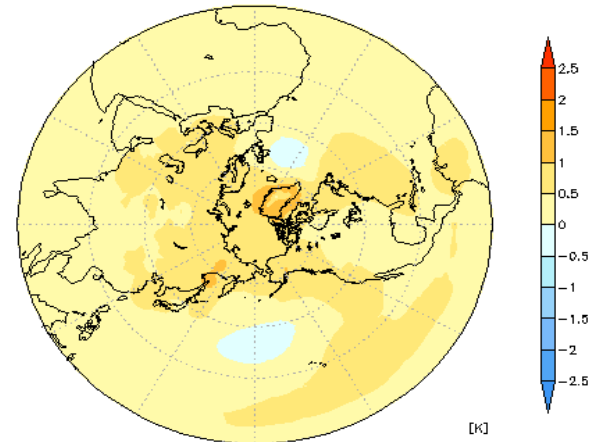
Sea level Pressure



2m Temperature



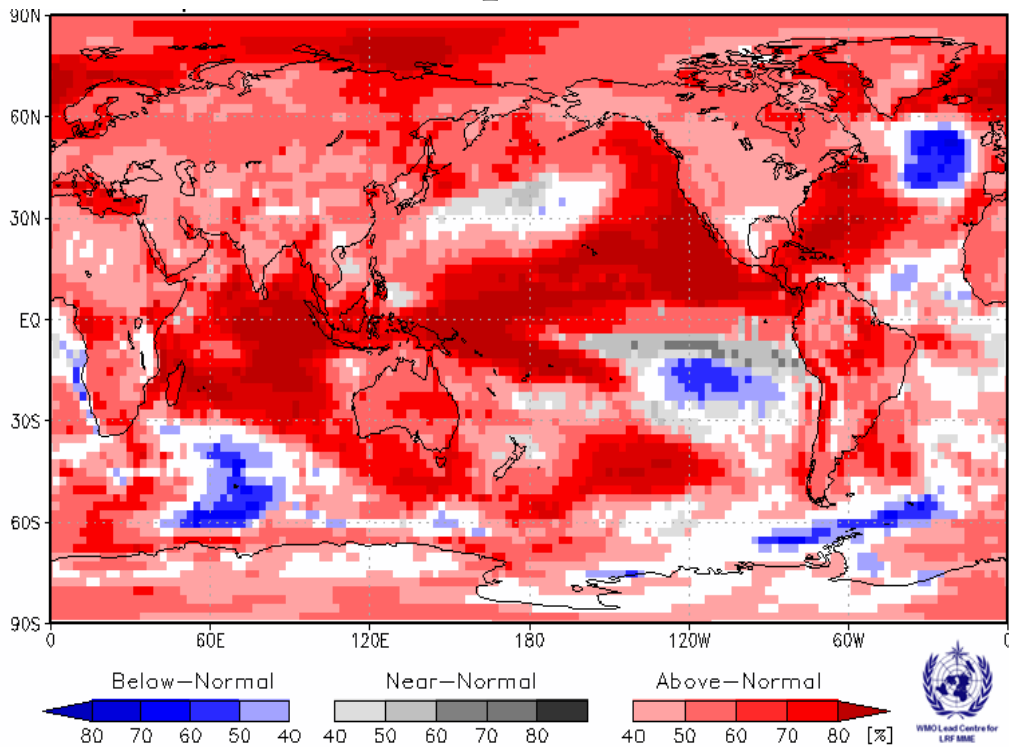
850hPa Temperature



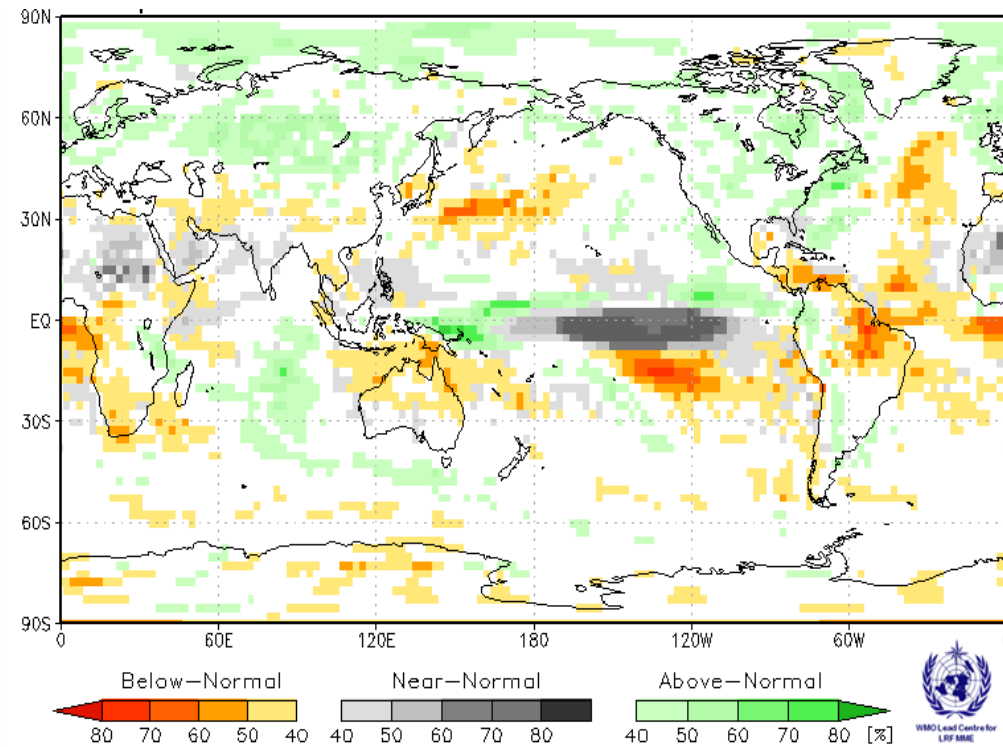
WMO LC PMME Prediction for DJF

GPCs : Seoul, Montreal(CANCM3, CANCM4), EXTER, CPTEC, MELBOURNE

Temperature



Precipitation



5. Summary and conclusion

- 2014/15 winter outlook
 - ✓ The winter monsoon is expected to be weak in 2014-15 winter.
 - ✓ Above normal temperatures in Korea(20:30:50)
 - ✓ Near normal precipitation in Korea(10:60:30)
- El Nino is favored to develop in the late fall and early winter.

Thank You !

A decorative horizontal band with a blue gradient background. On the right side, there are several overlapping, light blue circular arcs that create a sense of motion or a stylized globe.