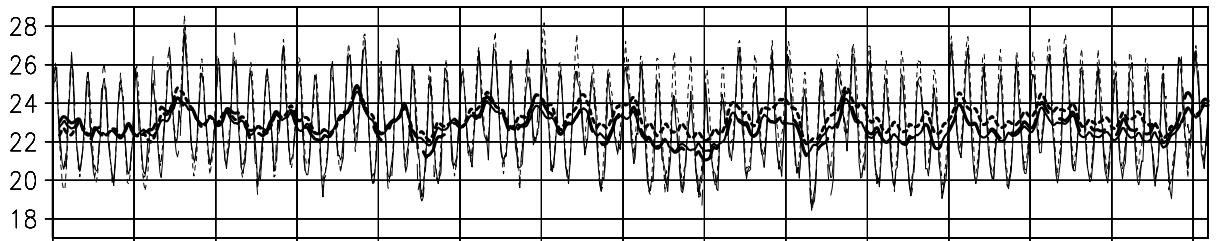


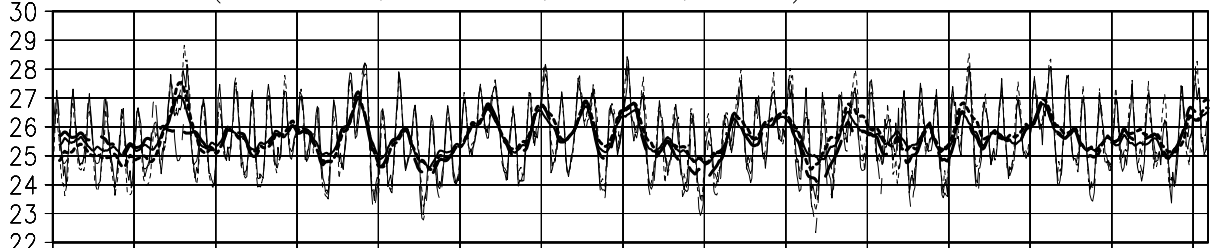
# 1870-1940 SSTs of NINO Regions

Nino1+2 : (lon=270,lon=280,lat=-10,lat=0)



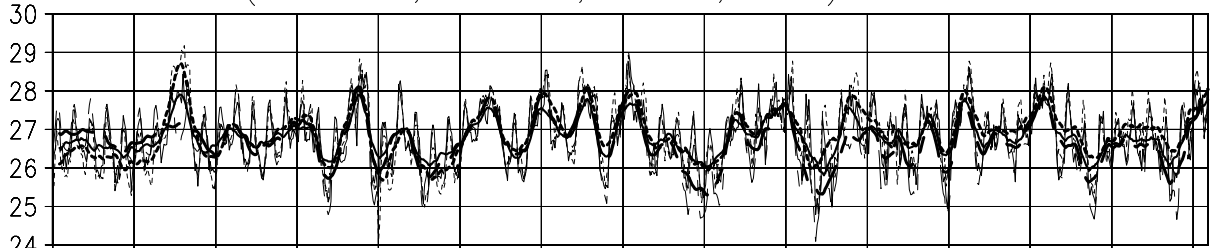
1870 1875 1880 1885 1890 1895 1900 1905 1910 1915 1920 1925 1930 1935 1940

Nino3 : (lon=210,lon=270,lat=-5,lat=5)



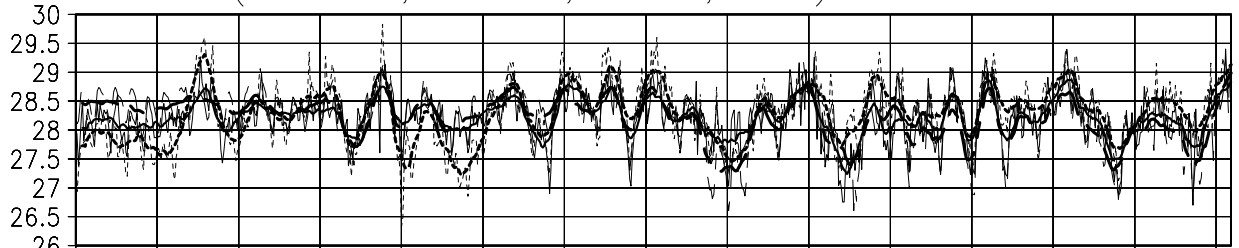
1870 1875 1880 1885 1890 1895 1900 1905 1910 1915 1920 1925 1930 1935 1940

Nino3.4 : (lon=190,lon=240,lat=-5,lat=5)



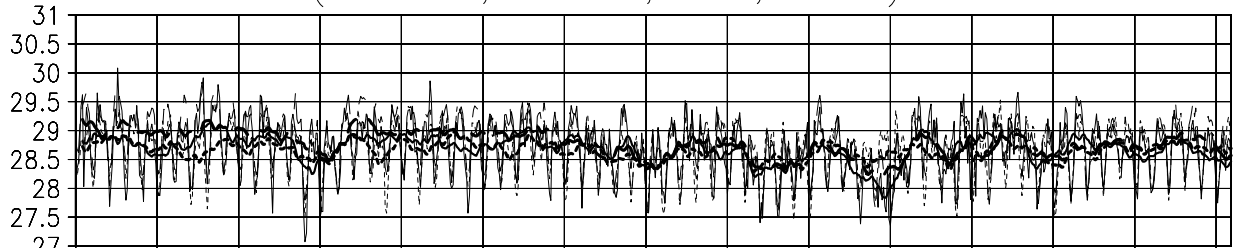
1870 1875 1880 1885 1890 1895 1900 1905 1910 1915 1920 1925 1930 1935 1940

Nino4 : (lon=160,lon=210,lat=-5,lat=5)



1870 1875 1880 1885 1890 1895 1900 1905 1910 1915 1920 1925 1930 1935 1940

Nino West : (lon=130,lon=150,lat=0,lat=15)



1870 1875 1880 1885 1890 1895 1900 1905 1910 1915 1920 1925 1930 1935 1940

## TIME SERIES OF AREA AVERAGED SEA SURFACE TEMPERATURE

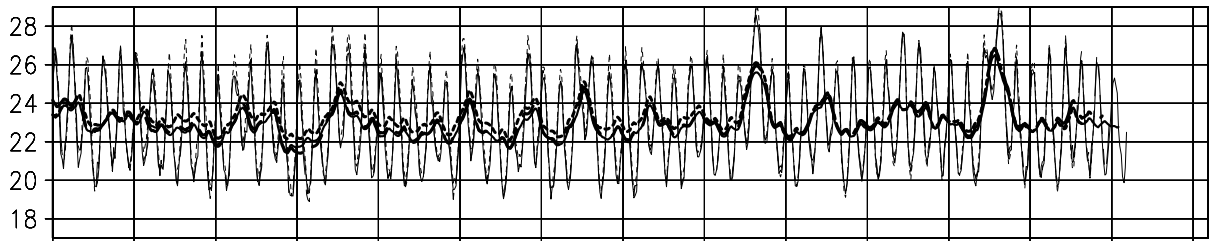
Solid lines indicate COBE-SST, short dashed lines indicate HadISST, long dashed lines indicate ERSST.v2. Period of time series and general name of area (El Nino monitoring regions or areas of Ocean) is written in the top title. The name of each region is written in the title of each figure. Thin lines show monthly temperature values and thick lines show 13-month running mean values.

## 海面水温の海域平均時系列

実線はCOBE-SST、短破線はHadISST、長破線はERSST.v2を示す。図上の表題に時系列の期間および海域の種類(エルニーニョ監視海域または5大洋の亜領域)を示す。また、各図の表題に海域の名前と経度および緯度の範囲を示す。細線は月平均値、太線は13か月移動平均値を表す。

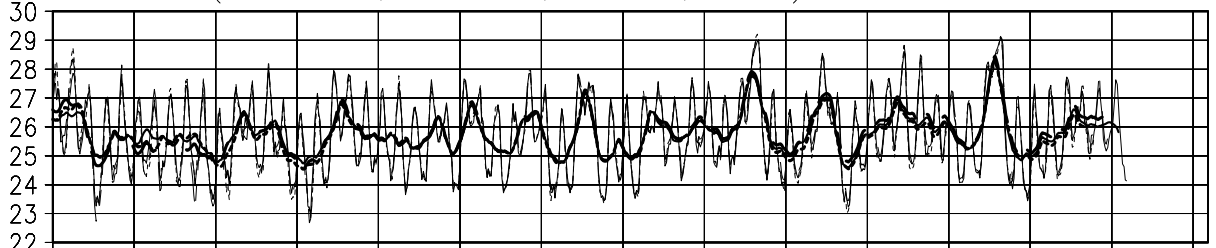
# 1940-2010 SSTs of NINO Regions

Nino1+2 : (lon=270,lon=280,lat=-10,lat=0)



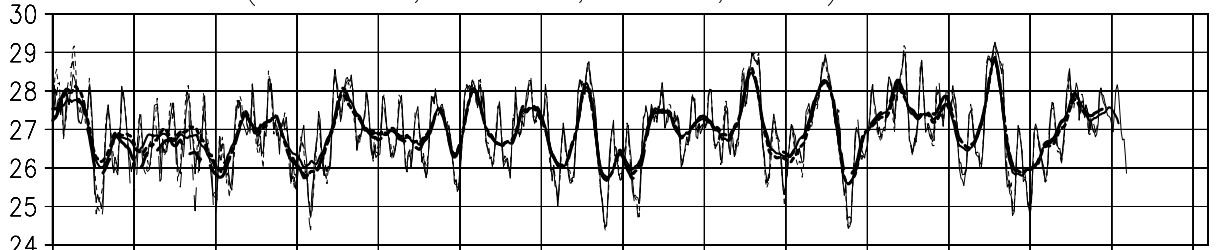
1940 1945 1950 1955 1960 1965 1970 1975 1980 1985 1990 1995 2000 2005 2010

Nino3 : (lon=210,lon=270,lat=-5,lat=5)



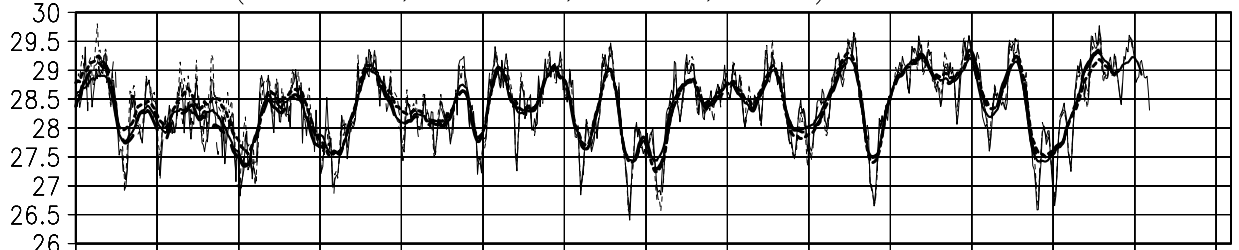
1940 1945 1950 1955 1960 1965 1970 1975 1980 1985 1990 1995 2000 2005 2010

Nino3.4 : (lon=190,lon=240,lat=-5,lat=5)



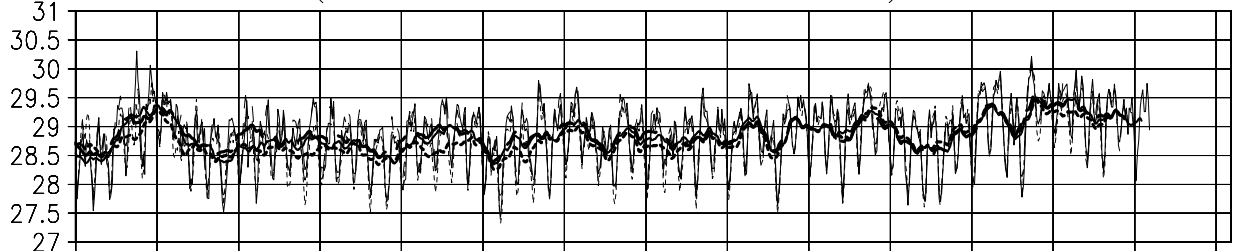
1940 1945 1950 1955 1960 1965 1970 1975 1980 1985 1990 1995 2000 2005 2010

Nino4 : (lon=160,lon=210,lat=-5,lat=5)



1940 1945 1950 1955 1960 1965 1970 1975 1980 1985 1990 1995 2000 2005 2010

Nino West : (lon=130,lon=150,lat=0,lat=15)



1940 1945 1950 1955 1960 1965 1970 1975 1980 1985 1990 1995 2000 2005 2010

## TIME SERIES OF AREA AVERAGED SEA SURFACE TEMPERATURE

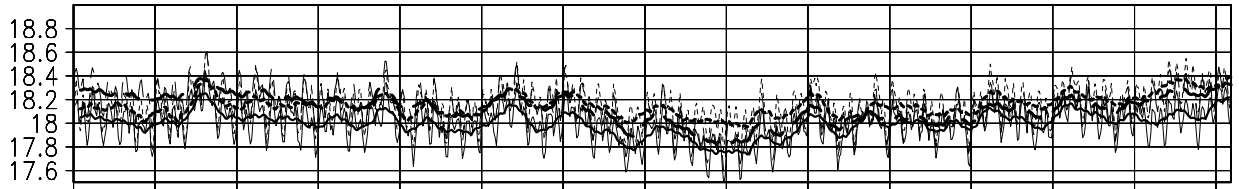
Solid lines indicate COBE-SST, short dashed lines indicate HadISST, long dashed lines indicate ERSST.v2. Period of time series and general name of area (El Nino monitoring regions or areas of Ocean) is written in the top title. The name of each region is written in the title of each figure. Thin lines show monthly temperature values and thick lines show 13-month running mean values.

## 海面水温の海域平均時系列

実線はCOBE-SST、短破線はHadISST、長破線はERSST.v2を示す。図上の表題に時系列の期間および海域の種類（エルニーニョ監視海域または5大洋の亜領域）を示す。また、各図の表題に海域の名前と経度および緯度の範囲を示す。細線は月平均値、太線は13か月移動平均値を表す。

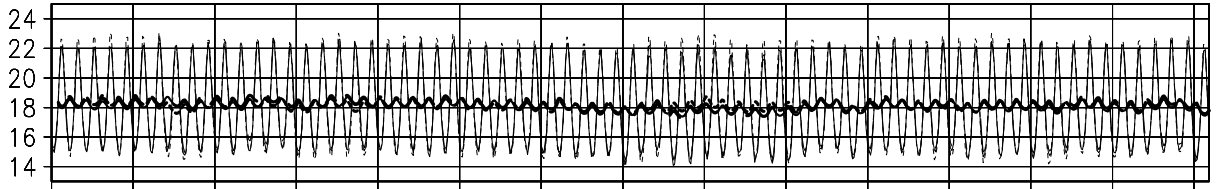
# 1870-1940 SSTs of Ocean Sub Areas

Global Ocean : (lon=0,lon=360,lat=-80,lat=80)



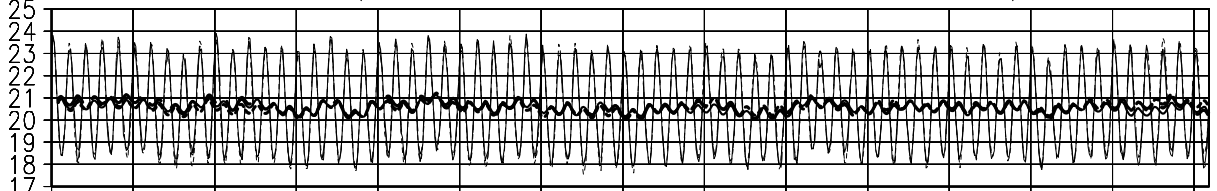
1870 1875 1880 1885 1890 1895 1900 1905 1910 1915 1920 1925 1930 1935 1940

Central North Pacific : (lon=150,lon=220,lat=20,lat=50)



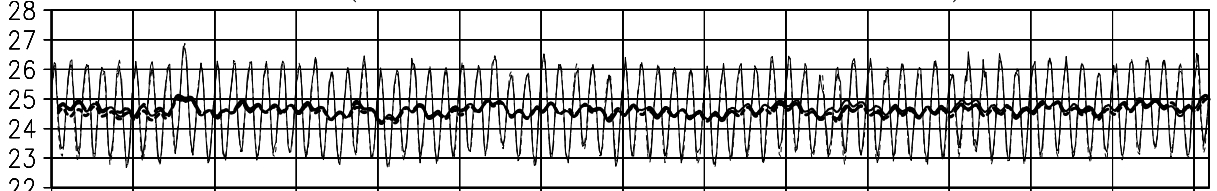
1870 1875 1880 1885 1890 1895 1900 1905 1910 1915 1920 1925 1930 1935 1940

South Pacific : (lon=170,lon=260,lat=-40,lat=-20)



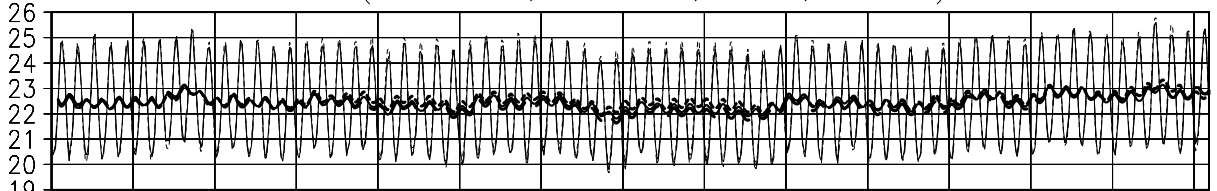
1870 1875 1880 1885 1890 1895 1900 1905 1910 1915 1920 1925 1930 1935 1940

Indian Ocean : (lon=50,lon=100,lat=-40,lat=10)



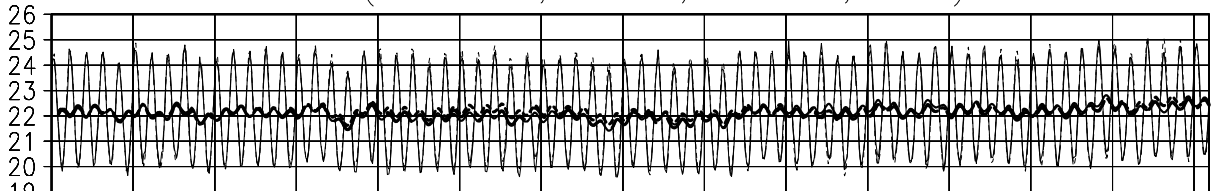
1870 1875 1880 1885 1890 1895 1900 1905 1910 1915 1920 1925 1930 1935 1940

North Atlantic : (lon=300,lon=350,lat=0,lat=50)



1870 1875 1880 1885 1890 1895 1900 1905 1910 1915 1920 1925 1930 1935 1940

South Atlantic : (lon=-50,lon=10,lat=-40,lat=0)



1870 1875 1880 1885 1890 1895 1900 1905 1910 1915 1920 1925 1930 1935 1940

## TIME SERIES OF AREA AVERAGED SEA SURFACE TEMPERATURE

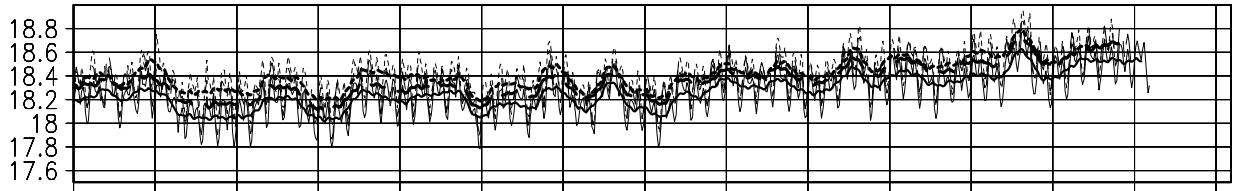
Solid lines indicate COBE-SST, short dashed lines indicate HadISST, long dashed lines indicate ERSST.v2. Period of time series and general name of area (El Nino monitoring regions or areas of Ocean) is written in the top title. The name of each region is written in the title of each figure. Thin lines show monthly temperature values and thick lines show 13-month running mean values.

## 海面水温の海域平均時系列

実線はCOBE-SST、短破線はHadISST、長破線はERSST.v2を示す。図上の表題に時系列の期間および海域の種類(エルニーニョ監視海域または5大洋の亜領域)を示す。また、各図の表題に海域の名前と経度および緯度の範囲を示す。細線は月平均値、太線は13か月移動平均値を表す。

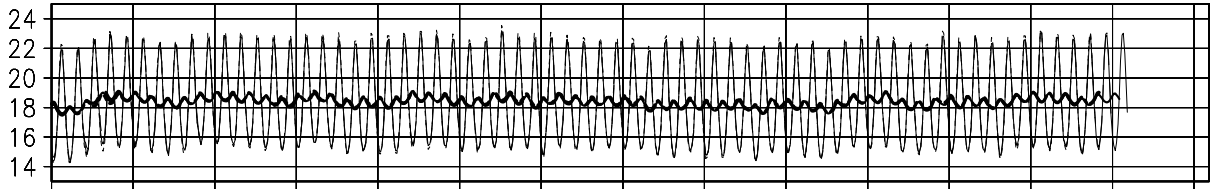
# 1940-2010 SSTs of Ocean Sub Areas

Global Ocean : (lon=0,lon=360,lat=-80,lat=80)



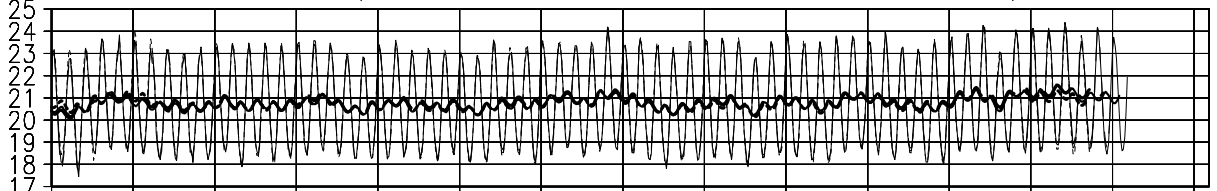
1940 1945 1950 1955 1960 1965 1970 1975 1980 1985 1990 1995 2000 2005 2010

Central North Pacific : (lon=150,lon=220,lat=20,lat=50)



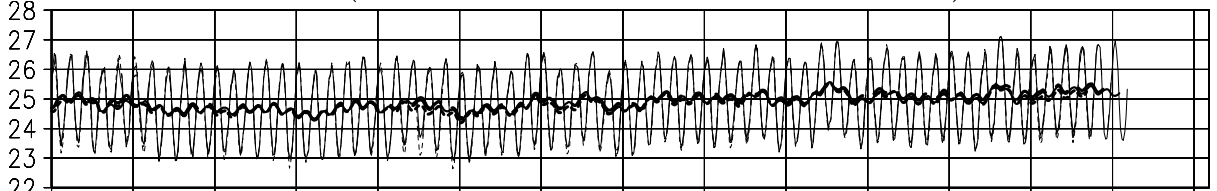
1940 1945 1950 1955 1960 1965 1970 1975 1980 1985 1990 1995 2000 2005 2010

South Pacific : (lon=170,lon=260,lat=-40,lat=-20)



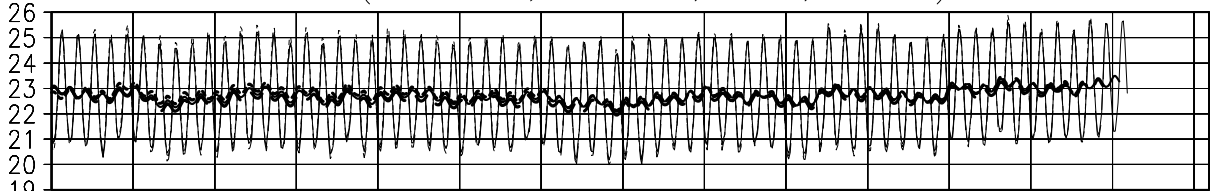
1940 1945 1950 1955 1960 1965 1970 1975 1980 1985 1990 1995 2000 2005 2010

Indian Ocean : (lon=50,lon=100,lat=-40,lat=10)



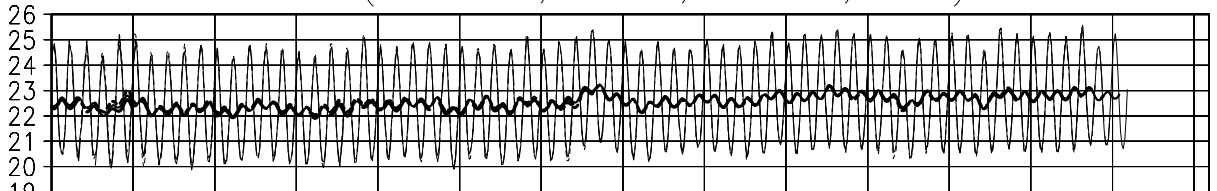
1940 1945 1950 1955 1960 1965 1970 1975 1980 1985 1990 1995 2000 2005 2010

North Atlantic : (lon=300,lon=350,lat=0,lat=50)



1940 1945 1950 1955 1960 1965 1970 1975 1980 1985 1990 1995 2000 2005 2010

South Atlantic : (lon=-50,lon=10,lat=-40,lat=0)



1940 1945 1950 1955 1960 1965 1970 1975 1980 1985 1990 1995 2000 2005 2010

## TIME SERIES OF AREA AVERAGED SEA SURFACE TEMPERATURE

Solid lines indicate COBE-SST, short dashed lines indicate HadISST, long dashed lines indicate ERSST.v2. Period of time series and general name of area (El Nino monitoring regions or areas of Ocean) is written in the top title. The name of each region is written in the title of each figure. Thin lines show monthly temperature values and thick lines show 13-month running mean values.

## 海面水温の海域平均時系列

実線はCOBE-SST、短破線はHadISST、長破線はERSST.v2を示す。図上の表題に時系列の期間および海域の種類(エルニーニョ監視海域または5大洋の亜領域)を示す。また、各図の表題に海域の名前と経度および緯度の範囲を示す。細線は月平均値、太線は13か月移動平均値を表す。