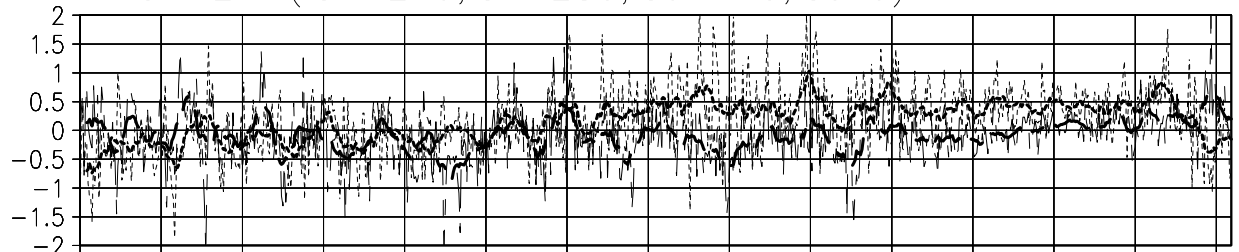


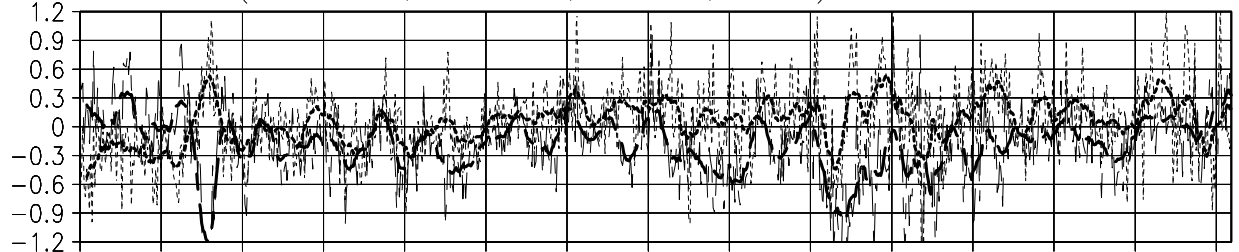
1870-1940 SST anomaly diff of NINO Regions

Nino1+2 : (lon=270,lon=280,lat=-10,lat=0)



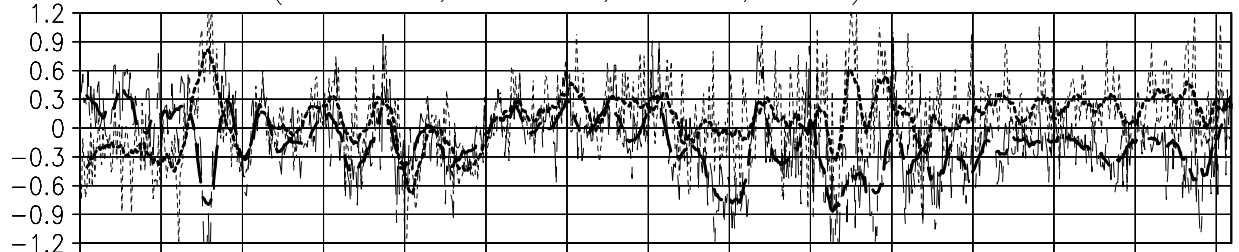
1870 1875 1880 1885 1890 1895 1900 1905 1910 1915 1920 1925 1930 1935 1940

Nino3 : (lon=210,lon=270,lat=-5,lat=5)



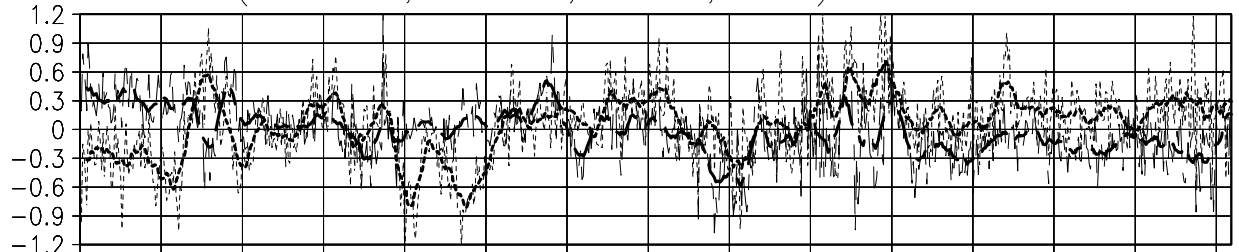
1870 1875 1880 1885 1890 1895 1900 1905 1910 1915 1920 1925 1930 1935 1940

Nino3.4 : (lon=190,lon=240,lat=-5,lat=5)



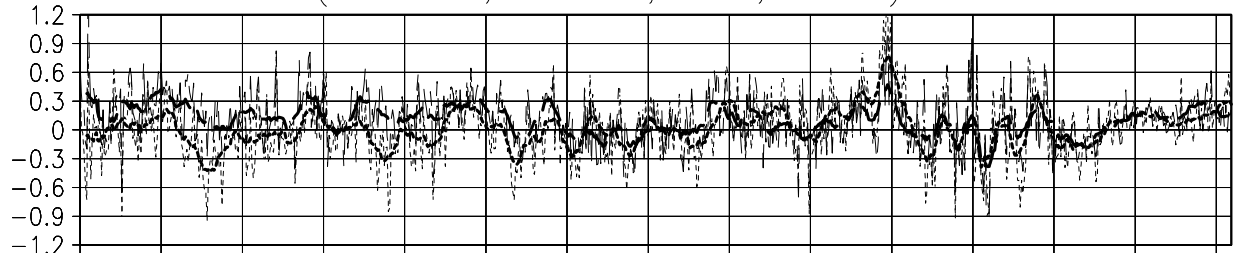
1870 1875 1880 1885 1890 1895 1900 1905 1910 1915 1920 1925 1930 1935 1940

Nino4 : (lon=160,lon=210,lat=-5,lat=5)



1870 1875 1880 1885 1890 1895 1900 1905 1910 1915 1920 1925 1930 1935 1940

Nino West : (lon=130,lon=150,lat=0,lat=15)



1870 1875 1880 1885 1890 1895 1900 1905 1910 1915 1920 1925 1930 1935 1940

TIME SERIES OF DIFFERENCES IN AREA AVERAGED SEA SURFACE TEMPERATURE ANOMALIES

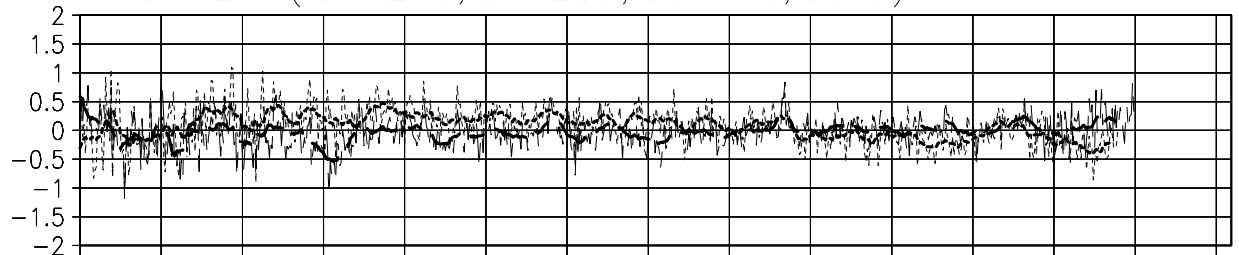
Short dashed lines show the differences between HadISST and COBE-SST. Long dashed lines show the differences between ERSST.v2 and COBE-SST. Period of time series and general name of area (El Nino monitoring regions or areas of Ocean) is written in the top title. The name of each region is written in the title of each figure. Thin lines show monthly temperature values and thick lines show 13-month running mean values.

海域平均海面水温偏差の時系列

短破線はHadISSTとCOBE-SSTの差を、長破線はERSST.v2とCOBE-SSTの差を示す。図上の表題に時系列の期間および海域の種類(エルニーニョ監視海域または5大洋の亜領域)を示す。また、各図の表題に海域の名前と経度および緯度の範囲を示す。細線は月平均値、太線は13か月移動平均値を表す。

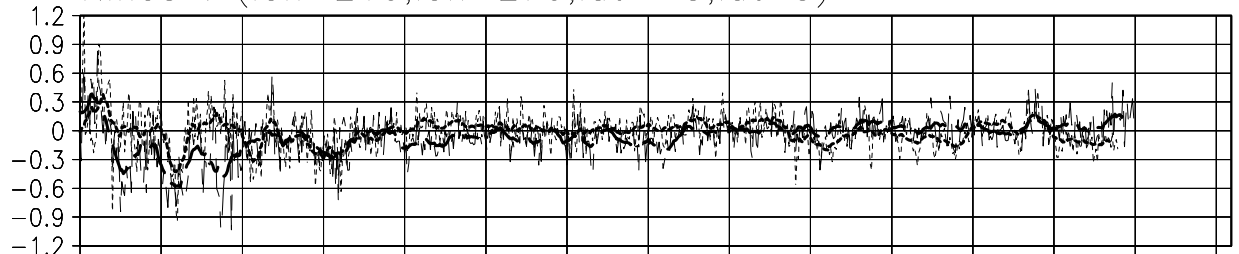
1940–2010 SST anomaly diff of NINO Regions

Nino1+2 : (lon=270,lon=280,lat=-10,lat=0)



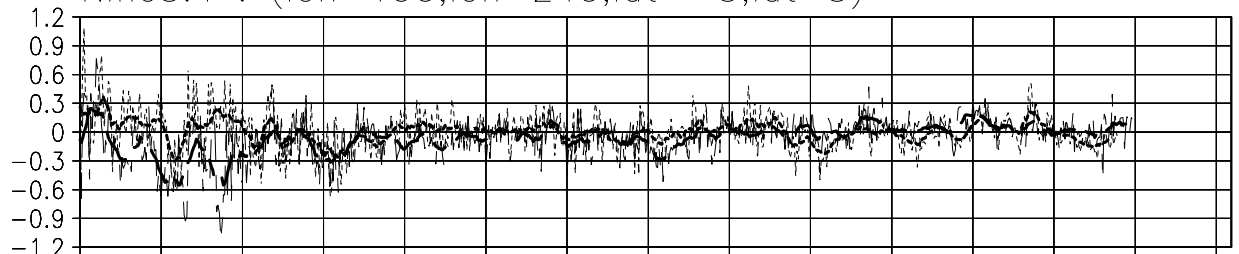
1940 1945 1950 1955 1960 1965 1970 1975 1980 1985 1990 1995 2000 2005 2010

Nino3 : (lon=210,lon=270,lat=-5,lat=5)



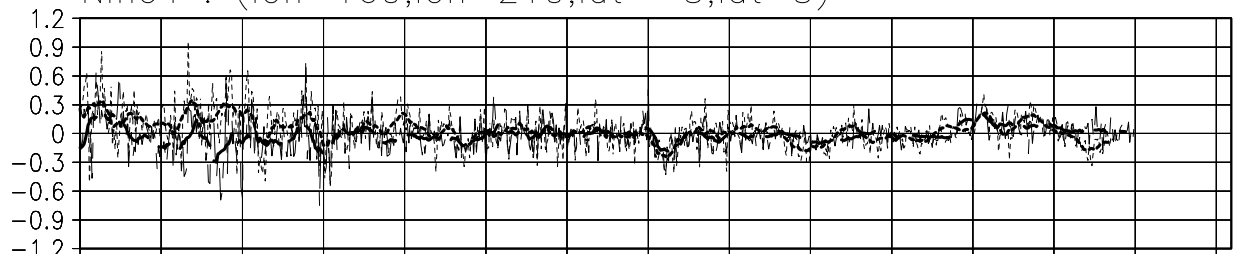
1940 1945 1950 1955 1960 1965 1970 1975 1980 1985 1990 1995 2000 2005 2010

Nino3.4 : (lon=190,lon=240,lat=-5,lat=5)



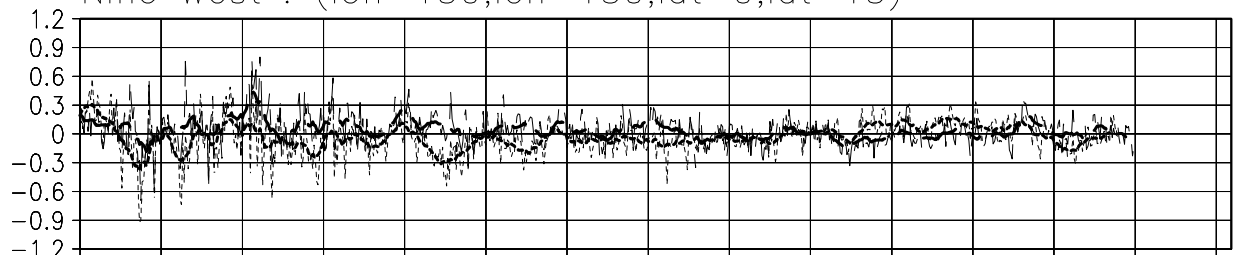
1940 1945 1950 1955 1960 1965 1970 1975 1980 1985 1990 1995 2000 2005 2010

Nino4 : (lon=160,lon=210,lat=-5,lat=5)



1940 1945 1950 1955 1960 1965 1970 1975 1980 1985 1990 1995 2000 2005 2010

Nino West : (lon=130,lon=150,lat=0,lat=15)



1940 1945 1950 1955 1960 1965 1970 1975 1980 1985 1990 1995 2000 2005 2010

TIME SERIES OF DIFFERENCES IN AREA AVERAGED SEA SURFACE TEMPERATURE ANOMALIES

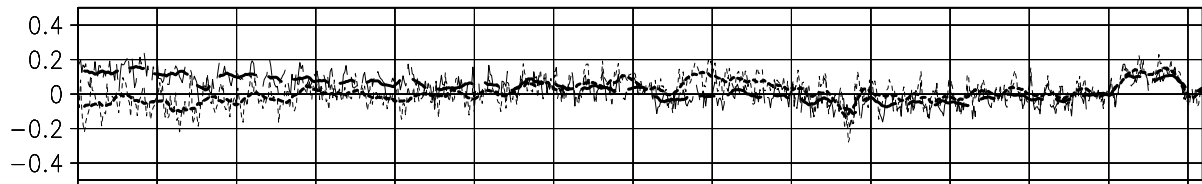
Short dashed lines show the differences between HadISST and COBE-SST. Long dashed lines show the differences between ERSST.v2 and COBE-SST. Period of time series and general name of area (El Nino monitoring regions or areas of Ocean) is written in the top title. The name of each region is written in the title of each figure. Thin lines show monthly temperature values and thick lines show 13-month running mean values.

海域平均海面水温偏差の時系列

短破線はHadISSTとCOBE-SSTの差を、長破線はERSST.v2とCOBE-SSTの差を示す。図上の表題に時系列の期間および海域の種類(エルニーニョ監視海域または5大洋の亜領域)を示す。また、各図の表題に海域の名前と経度および緯度の範囲を示す。細線は月平均値、太線は13か月移動平均値を表す。

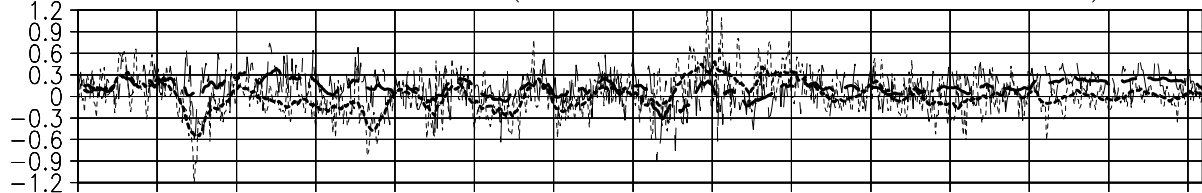
1870-1940 SST anomaly diff of Ocean Sub Areas

Global Ocean : (lon=0,lon=360,lat=-80,lat=80)



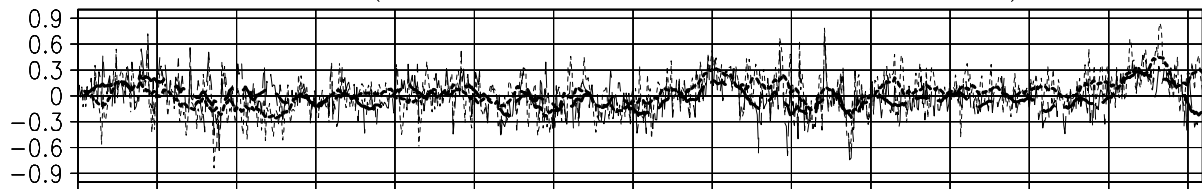
1870 1875 1880 1885 1890 1895 1900 1905 1910 1915 1920 1925 1930 1935 1940

Central North Pacific : (lon=150,lon=220,lat=20,lat=50)



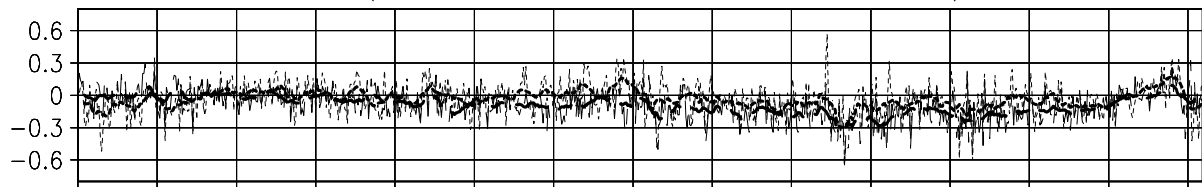
1870 1875 1880 1885 1890 1895 1900 1905 1910 1915 1920 1925 1930 1935 1940

South Pacific : (lon=170,lon=260,lat=-40,lat=-20)



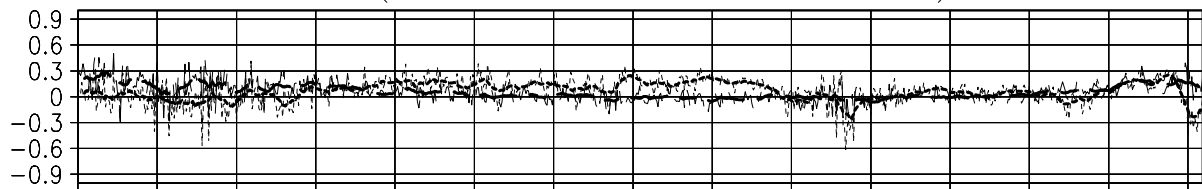
1870 1875 1880 1885 1890 1895 1900 1905 1910 1915 1920 1925 1930 1935 1940

Indian Ocean : (lon=50,lon=100,lat=-40,lat=10)



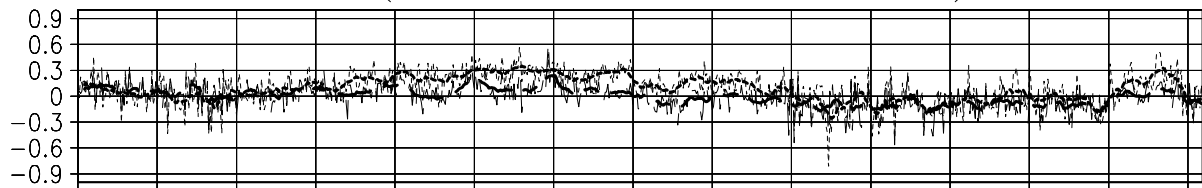
1870 1875 1880 1885 1890 1895 1900 1905 1910 1915 1920 1925 1930 1935 1940

North Atlantic : (lon=300,lon=350,lat=0,lat=50)



1870 1875 1880 1885 1890 1895 1900 1905 1910 1915 1920 1925 1930 1935 1940

South Atlantic : (lon=-50,lon=10,lat=-40,lat=0)



1870 1875 1880 1885 1890 1895 1900 1905 1910 1915 1920 1925 1930 1935 1940

TIME SERIES OF DIFFERENCES IN AREA AVERAGED SEA SURFACE TEMPERATURE ANOMALIES

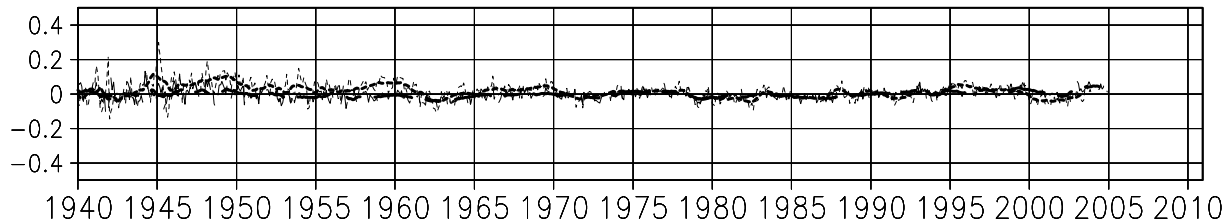
Short dashed lines show the differences between HadISST and COBE-SST. Long dashed lines show the differences between ERSST.v2 and COBE-SST. Period of time series and general name of area (El Nino monitoring regions or areas of Ocean) is written in the top title. The name of each region is written in the title of each figure. Thin lines show monthly temperature values and thick lines show 13-month running mean values.

海域平均海面水温偏差の時系列

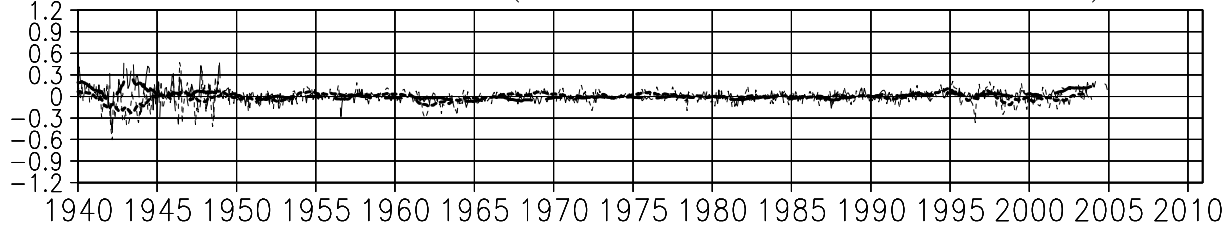
短破線はHadISSTとCOBE-SSTの差を、長破線はERSST.v2とCOBE-SSTの差を示す。図上の表題に時系列の期間および海域の種類(エルニーニョ監視海域または5大洋の亜領域)を示す。また、各図の表題に海域の名前と経度および緯度の範囲を示す。細線は月平均値、太線は13か月移動平均値を表す。

1940-2010 SST anomaly diff of Ocean Sub Areas

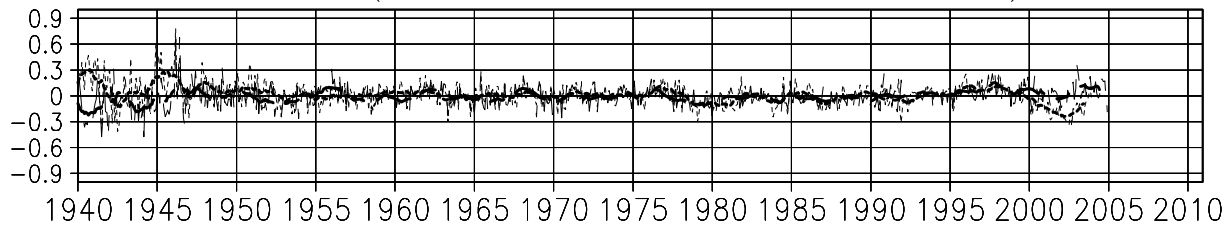
Global Ocean : (lon=0,lon=360,lat=-80,lat=80)



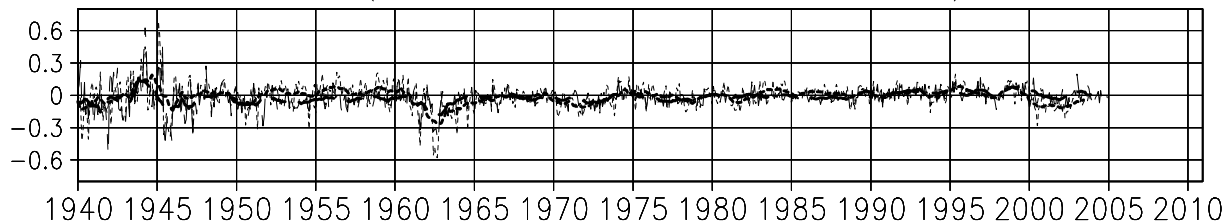
Central North Pacific : (lon=150,lon=220,lat=20,lat=50)



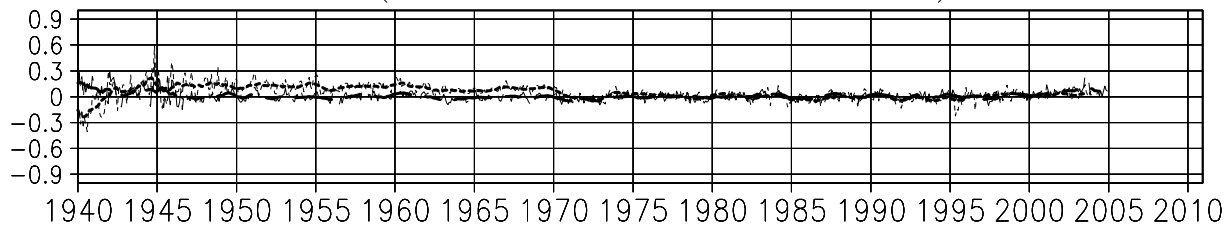
South Pacific : (lon=170,lon=260,lat=-40,lat=-20)



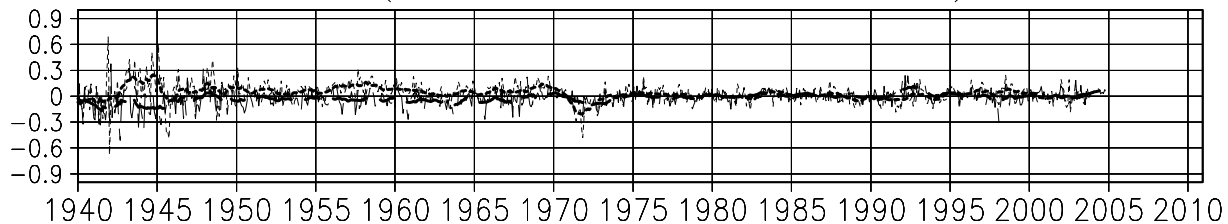
Indian Ocean : (lon=50,lon=100,lat=-40,lat=10)



North Atlantic : (lon=300,lon=350,lat=0,lat=50)



South Atlantic : (lon=-50,lon=10,lat=-40,lat=0)



TIME SERIES OF DIFFERENCES IN AREA AVERAGED SEA SURFACE TEMPERATURE ANOMALIES

Short dashed lines show the differences between HadISST and COBE-SST. Long dashed lines show the differences between ERSST.v2 and COBE-SST. Period of time series and general name of area (El Nino monitoring regions or areas of Ocean) is written in the top title. The name of each region is written in the title of each figure. Thin lines show monthly temperature values and thick lines show 13-month running mean values.

海域平均海面水温偏差の時系列

短破線はHadISSTとCOBE-SSTの差を、長破線はERSST.v2とCOBE-SSTの差を示す。図上の表題に時系列の期間および海域の種類(エルニーニョ監視海域または5大洋の亜領域)を示す。また、各図の表題に海域の名前と経度および緯度の範囲を示す。細線は月平均値、太線は13か月移動平均値を表す。